



ELECTRONIC COPY

LG768632718
Report verification at igi.org



March 13, 2026
IGI Report Number **LG768632718**
Description **LABORATORY GROWN DIAMOND**
Shape and Cutting Style **PRINCESS CUT**
Measurements **7.54 X 7.49 X 4.86 MM**
GRADING RESULTS
Carat Weight **2.32 CARATS**
Color Grade **D**
Clarity Grade **INTERNALLY FLAWLESS**

March 13, 2026
IGI Report Number **LG768632718**
Description **LABORATORY GROWN DIAMOND**
Shape and Cutting Style **PRINCESS CUT**
Measurements **7.54 X 7.49 X 4.86 MM**

GRADING RESULTS

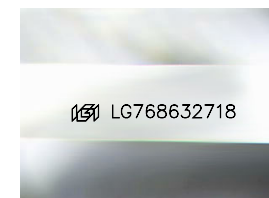
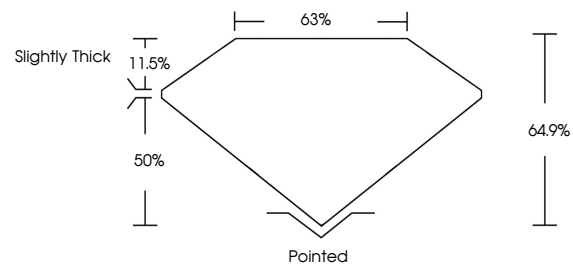
Carat Weight **2.32 CARATS**
Color Grade **D**
Clarity Grade **INTERNALLY FLAWLESS**

ADDITIONAL GRADING INFORMATION

Polish **EXCELLENT**
Symmetry **EXCELLENT**
Fluorescence **NONE**
Inscription(s) **IGI LG768632718**

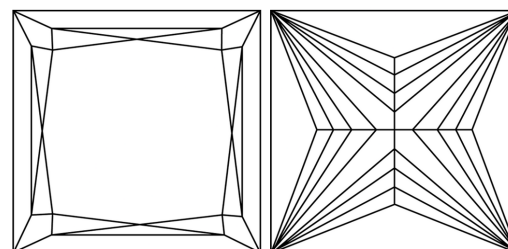
Comments: As Grown - No indication of post-growth treatment.
This Laboratory Grown Diamond was created by High Pressure High Temperature (HPHT) growth process. Type II

PROPORTIONS



Sample Image Used

CLARITY CHARACTERISTICS



KEY TO SYMBOLS

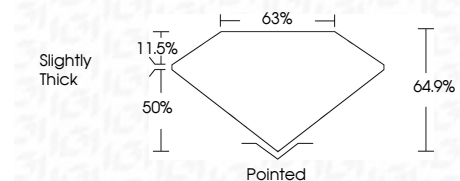
Red symbols indicate internal characteristics.
Green symbols indicate external characteristics.

COLOR

D E F G H I J Faint Very Light Light

CLARITY

FL	IF	VS ¹⁻²	VS ¹⁻²	SI ¹⁻²	I ¹⁻³
Flawless	Internally Flawless	Very Very Slightly Included	Very Slightly Included	Slightly Included	Included



ADDITIONAL GRADING INFORMATION

Polish **EXCELLENT**
Symmetry **EXCELLENT**
Fluorescence **NONE**
Inscription(s) **IGI LG768632718**
Comments: As Grown - No indication of post-growth treatment.
This Laboratory Grown Diamond was created by High Pressure High Temperature (HPHT) growth process. Type II



March 13, 2026
IGI Report No LG768632718
PRINCESS CUT
7.54 X 7.49 X 4.86 MM
2.32 CARATS
D
Color Grade
Clarity Grade
Depth
Table
Girdle
Slightly Thick
Pointed
Polish
Symmetry
Fluorescence
Inscription(s)
EXCELLENT
EXCELLENT
NONE
IGI LG768632718
Comments: As Grown - No indication of post-growth treatment.
This Laboratory Grown Diamond was created by High Pressure High Temperature (HPHT) growth process. Type II