



ELECTRONIC COPY

LG768632442
Report verification at igi.org



March 9, 2026
IGI Report Number LG768632442
Description LABORATORY GROWN DIAMOND
Shape and Cutting Style CUSHION BRILLIANT
Measurements 9.67 X 7.17 X 4.95 MM
GRADING RESULTS
Carat Weight 2.74 CARATS
Color Grade D
Clarity Grade INTERNALLY FLAWLESS

March 9, 2026
IGI Report Number LG768632442
Description LABORATORY GROWN DIAMOND
Shape and Cutting Style CUSHION BRILLIANT
Measurements 9.67 X 7.17 X 4.95 MM

GRADING RESULTS

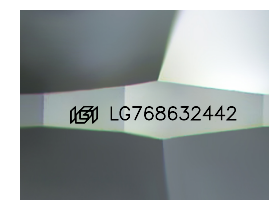
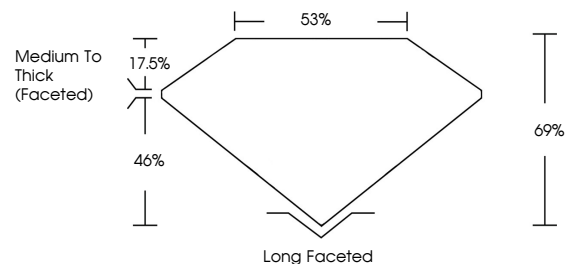
Carat Weight 2.74 CARATS
Color Grade D
Clarity Grade INTERNALLY FLAWLESS

ADDITIONAL GRADING INFORMATION

Polish EXCELLENT
Symmetry EXCELLENT
Fluorescence NONE
Inscription(s) IGI LG768632442

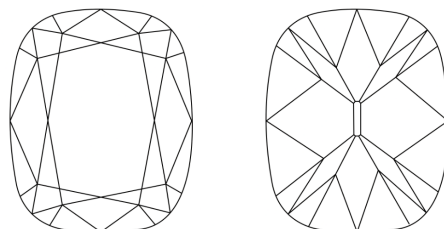
Comments: As Grown - No indication of post-growth treatment.
This Laboratory Grown Diamond was created by High Pressure High Temperature (HPHT) growth process.
Type II

PROPORTIONS



Sample Image Used

CLARITY CHARACTERISTICS



KEY TO SYMBOLS

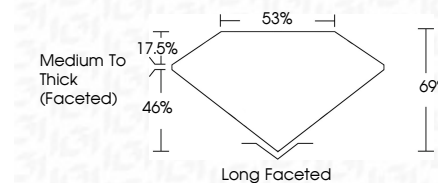
Red symbols indicate internal characteristics.
Green symbols indicate external characteristics.

COLOR

D E F G H I J Faint Very Light Light

CLARITY

Table with columns: FL, IF, VS 1-2, VS 1-2, SI 1-2, I 1-3 and corresponding descriptions: Flawless, Internally Flawless, Very Very Slightly Included, Very Slightly Included, Slightly Included, Included



ADDITIONAL GRADING INFORMATION

Polish EXCELLENT
Symmetry EXCELLENT
Fluorescence NONE
Inscription(s) IGI LG768632442
Comments: As Grown - No indication of post-growth treatment.
This Laboratory Grown Diamond was created by High Pressure High Temperature (HPHT) growth process.
Type II



March 9, 2026
IGI Report No LG768632442
CUSHION BRILLIANT
2.74 CARATS
Color Grade D
Clarity Grade IF
Depth 69%
Table 53%
Girdle Medium To Thick (Faceted)
Culet Long Faceted
Polish EXCELLENT
Symmetry EXCELLENT
Fluorescence NONE
Inscription(s) IGI LG768632442

Comments: As Grown - No indication of post-growth treatment.
This Laboratory Grown Diamond was created by High Pressure High Temperature (HPHT) growth process.
Type II