



ELECTRONIC COPY

LG768632290
Report verification at igi.org



March 14, 2026

IGI Report Number LG768632290

Description LABORATORY GROWN DIAMOND

Shape and Cutting Style PRINCESS CUT

Measurements 8.17 X 8.09 X 5.63 MM

GRADING RESULTS

Carat Weight 3.36 CARATS

Color Grade D

Clarity Grade FLAWLESS

March 14, 2026
IGI Report Number LG768632290
Description LABORATORY GROWN DIAMOND
Shape and Cutting Style PRINCESS CUT
Measurements 8.17 X 8.09 X 5.63 MM

GRADING RESULTS

Carat Weight 3.36 CARATS

Color Grade D

Clarity Grade FLAWLESS

ADDITIONAL GRADING INFORMATION

Polish EXCELLENT

Symmetry EXCELLENT

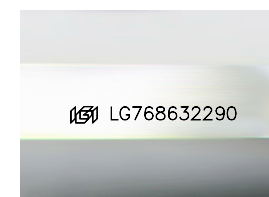
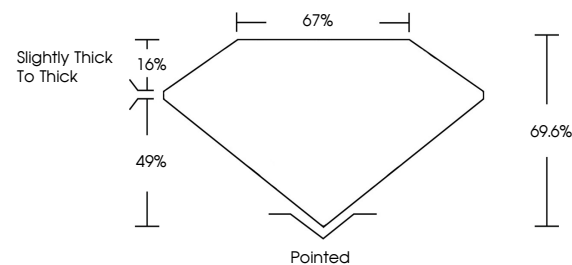
Fluorescence NONE

Inscription(s) IGI LG768632290

Comments: As Grown - No indication of post-growth treatment.

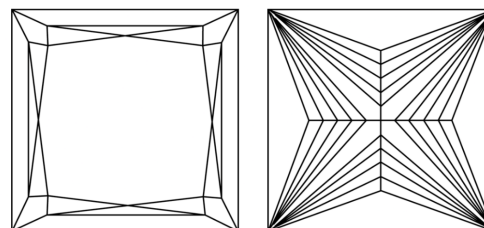
This Laboratory Grown Diamond was created by High Pressure High Temperature (HPHT) growth process. Type II

PROPORTIONS



Sample Image Used

CLARITY CHARACTERISTICS



KEY TO SYMBOLS

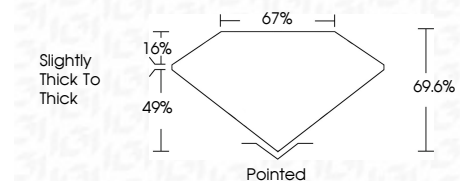
Red symbols indicate internal characteristics. Green symbols indicate external characteristics.

COLOR

D E F G H I J Faint Very Light Light

CLARITY

FL IF VS 1-2 VS 1-2 SI 1-2 I 1-3
Flawless Internally Flawless Very Very Slightly Included Very Slightly Included Slightly Included Included



ADDITIONAL GRADING INFORMATION

Polish EXCELLENT

Symmetry EXCELLENT

Fluorescence NONE

Inscription(s) IGI LG768632290

Comments: As Grown - No indication of post-growth treatment.

This Laboratory Grown Diamond was created by High Pressure High Temperature (HPHT) growth process. Type II



IGI



March 14, 2026
IGI Report No LG768632290
PRINCESS CUT
3.36 CARATS
D
8.17 X 8.09 X 5.63 MM
Carat Weight
Color Grade
Clarity Grade
Depth
Table
Girdle
Slightly thick to thick
Pointed
EXCELLENT
EXCELLENT
NONE
IGI LG768632290
Comments: As Grown - No indication of post-growth treatment. This Laboratory Grown Diamond was created by High Pressure High Temperature (HPHT) growth process. Type II