



ELECTRONIC COPY

LG768631682 Report verification at igi.org



March 5, 2026 IGI Report Number LG768631682 Description LABORATORY GROWN DIAMOND Shape and Cutting Style SQUARE CUSHION MODIFIED BRILLIANT Measurements 8.78 X 8.62 X 5.64 MM GRADING RESULTS Carat Weight 3.19 CARATS Color Grade D Clarity Grade INTERNALLY FLAWLESS

March 5, 2026 IGI Report Number LG768631682 Description LABORATORY GROWN DIAMOND Shape and Cutting Style SQUARE CUSHION MODIFIED BRILLIANT Measurements 8.78 X 8.62 X 5.64 MM

GRADING RESULTS

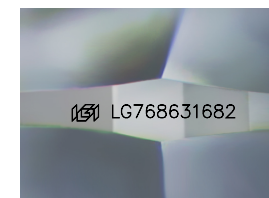
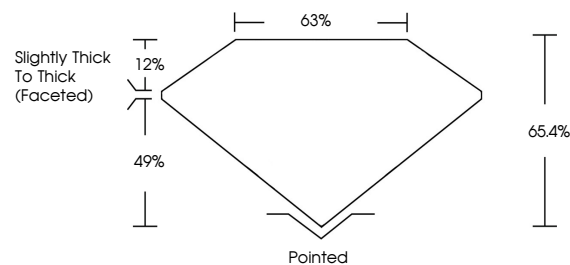
Carat Weight 3.19 CARATS Color Grade D Clarity Grade INTERNALLY FLAWLESS

ADDITIONAL GRADING INFORMATION

Polish EXCELLENT Symmetry EXCELLENT Fluorescence NONE Inscription(s) LG768631682

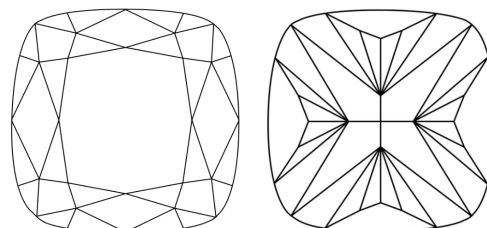
Comments: As Grown - No indication of post-growth treatment. This Laboratory Grown Diamond was created by High Pressure High Temperature (HPHT) growth process. Type II

PROPORTIONS



Sample Image Used

CLARITY CHARACTERISTICS



KEY TO SYMBOLS

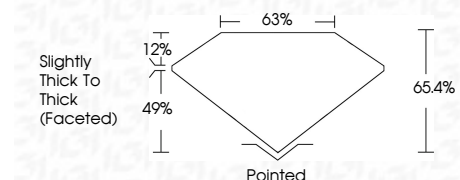
Red symbols indicate internal characteristics. Green symbols indicate external characteristics.

COLOR

D E F G H I J Faint Very Light Light

CLARITY

Table with columns for clarity grades: FL, IF, VS 1-2, VS 1-2, SI 1-2, I 1-3. Corresponding descriptions: Flawless, Internally Flawless, Very Very Slightly Included, Very Slightly Included, Slightly Included, Included.



ADDITIONAL GRADING INFORMATION

Polish EXCELLENT Symmetry EXCELLENT Fluorescence NONE Inscription(s) LG768631682 Comments: As Grown - No indication of post-growth treatment. This Laboratory Grown Diamond was created by High Pressure High Temperature (HPHT) growth process. Type II



March 5, 2026 IGI Report No LG768631682 SQUARE CUSHION MODIFIED BRILLIANT 3.19 CARATS D LF 65.4% 63% Slightly Thick To Thick (Faceted) Pointed EXCELLENT EXCELLENT NONE NONE LG768631682

Comments: As Grown - No indication of post-growth treatment. This Laboratory Grown Diamond was created by High Pressure High Temperature (HPHT) growth process. Type II