



ELECTRONIC COPY

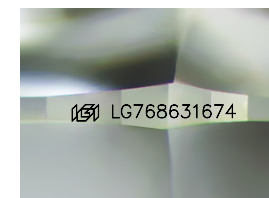
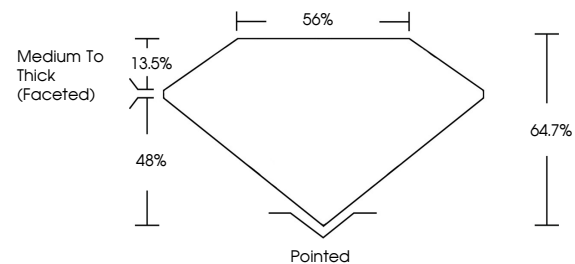
LG768631674
Report verification at igi.org



March 2, 2026
IGI Report Number **LG768631674**
Description **LABORATORY GROWN DIAMOND**
Shape and Cutting Style **CUSHION MODIFIED BRILLIANT**
Measurements **9.98 X 7.85 X 5.08 MM**
GRADING RESULTS
Carat Weight **3.00 CARATS**
Color Grade **D**
Clarity Grade **INTERNALLY FLAWLESS**

March 2, 2026
IGI Report Number **LG768631674**
Description **LABORATORY GROWN DIAMOND**
Shape and Cutting Style **CUSHION MODIFIED BRILLIANT**
Measurements **9.98 X 7.85 X 5.08 MM**

PROPORTIONS

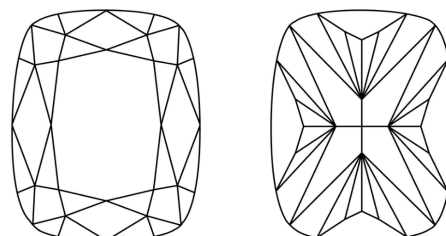


Sample Image Used

GRADING RESULTS

Carat Weight **3.00 CARATS**
Color Grade **D**
Clarity Grade **INTERNALLY FLAWLESS**

CLARITY CHARACTERISTICS



KEY TO SYMBOLS

Red symbols indicate internal characteristics.
Green symbols indicate external characteristics.

ADDITIONAL GRADING INFORMATION

Polish **EXCELLENT**
Symmetry **EXCELLENT**
Fluorescence **NONE**
Inscription(s) **IGI LG768631674**

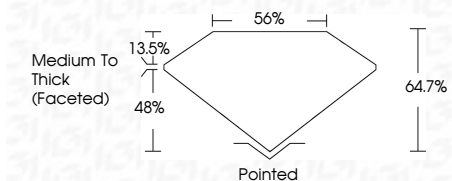
Comments: As Grown - No indication of post-growth treatment.
This Laboratory Grown Diamond was created by High Pressure High Temperature (HPHT) growth process.
Type II

COLOR

D E F G H I J Faint Very Light Light

CLARITY

FL	IF	VS ¹⁻²	VS ¹⁻²	SI ¹⁻²	I ¹⁻³
Flawless	Internally Flawless	Very Very Slightly Included	Very Slightly Included	Slightly Included	Included



ADDITIONAL GRADING INFORMATION

Polish **EXCELLENT**
Symmetry **EXCELLENT**
Fluorescence **NONE**
Inscription(s) **IGI LG768631674**
Comments: As Grown - No indication of post-growth treatment.
This Laboratory Grown Diamond was created by High Pressure High Temperature (HPHT) growth process.
Type II



March 2, 2026
IGI Report No LG768631674
CUSHION MODIFIED BRILLIANT
9.98 X 7.85 X 5.08 MM
3.00 CARATS
D
LF
64.7%
85%
Medium To Thick (Faceted)
Pointed
EXCELLENT
EXCELLENT
NONE
IGI LG768631674

Comments: As Grown - No indication of post-growth treatment.
This Laboratory Grown Diamond was created by High Pressure High Temperature (HPHT) growth process.
Type II