



**ELECTRONIC COPY**

LG768631417  
Report verification at igi.org



February 27, 2026

IGI Report Number **LG768631417**

Description **LABORATORY GROWN DIAMOND**

Shape and Cutting Style **ROUND BRILLIANT**

Measurements **6.51 - 6.56 X 3.88 MM**

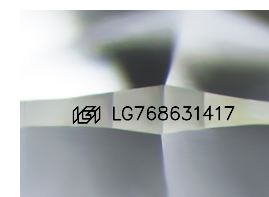
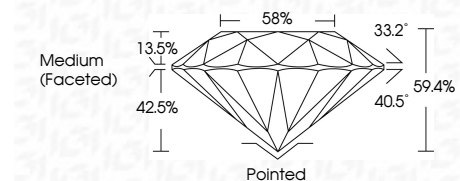
**GRADING RESULTS**

Carat Weight **1.00 CARAT**

Color Grade **D**

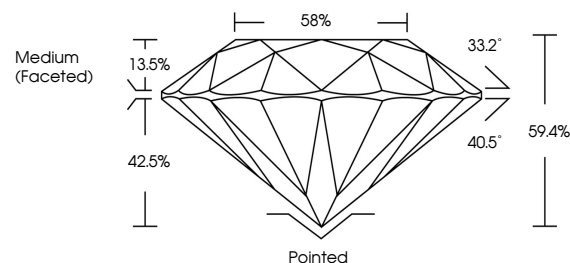
Clarity Grade **INTERNALLY FLAWLESS**

Cut Grade **IDEAL**

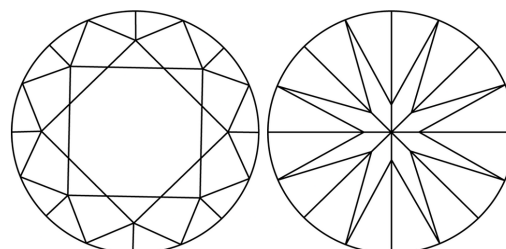


Sample Image Used

**PROPORTIONS**



**CLARITY CHARACTERISTICS**



**KEY TO SYMBOLS**

Red symbols indicate internal characteristics.  
Green symbols indicate external characteristics.

**COLOR**

D E F G H I J Faint Very Light Light

**CLARITY**

FL	IF	VS <sup>1-2</sup>	VS <sup>1-2</sup>	SI <sup>1-2</sup>	I <sup>1-3</sup>
Flawless	Internally Flawless	Very Very Slightly Included	Very Slightly Included	Slightly Included	Included

**ADDITIONAL GRADING INFORMATION**

Polish **EXCELLENT**

Symmetry **EXCELLENT**

Fluorescence **NONE**

Inscription(s) **IGI LG768631417**

Comments: As Grown - No indication of post-growth treatment.

This Laboratory Grown Diamond was created by High Pressure High Temperature (HPHT) growth process. Type II



**IGI**



February 27, 2026	1.00 CARAT	D	Pointed
IGI Report No LG768631417	6.51 - 6.56 X 3.88 MM	IDEAL	EXCELLENT
ROUND BRILLIANT	Color Grade	59.4%	EXCELLENT
	Clarity Grade	88%	NONE
	Depth	Medium (Faceted)	None
	Table	IGI LG768631417	
	Girdle		
	Culet		
	Polish		
	Symmetry		
	Fluorescence		
	Inscription(s)		
	Comments:		
	As Grown - No indication of post-growth treatment.		
	This Laboratory Grown Diamond was created by High Pressure High Temperature (HPHT) growth process. Type II		