



**ELECTRONIC COPY**

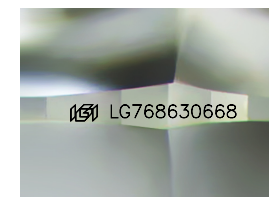
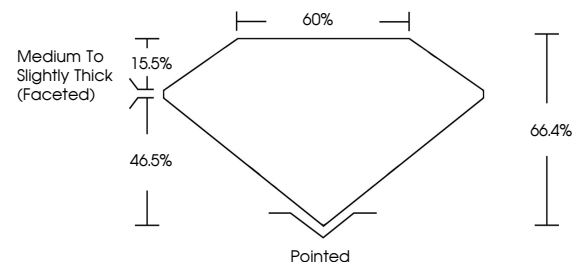
LG768630668  
Report verification at igi.org



April 13, 2026  
IGI Report Number **LG768630668**  
Description **LABORATORY GROWN DIAMOND**  
Shape and Cutting Style **CUSHION MODIFIED BRILLIANT**  
Measurements **11.53 X 9.47 X 6.29 MM**  
**GRADING RESULTS**  
Carat Weight **5.31 CARATS**  
Color Grade **D**  
Clarity Grade **FLAWLESS**

April 13, 2026  
IGI Report Number **LG768630668**  
Description **LABORATORY GROWN DIAMOND**  
Shape and Cutting Style **CUSHION MODIFIED BRILLIANT**  
Measurements **11.53 X 9.47 X 6.29 MM**

**PROPORTIONS**

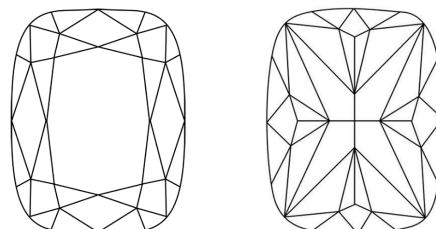


Sample Image Used

**GRADING RESULTS**

Carat Weight **5.31 CARATS**  
Color Grade **D**  
Clarity Grade **FLAWLESS**

**CLARITY CHARACTERISTICS**



**KEY TO SYMBOLS**

Red symbols indicate internal characteristics.  
Green symbols indicate external characteristics.

**ADDITIONAL GRADING INFORMATION**

Polish **EXCELLENT**  
Symmetry **EXCELLENT**  
Fluorescence **NONE**  
Inscription(s) **IGI LG768630668**

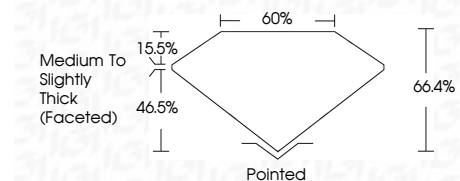
Comments: As Grown - No indication of post-growth treatment.  
This Laboratory Grown Diamond was created by High Pressure High Temperature (HPHT) growth process.  
Type II

**COLOR**

D E F G H I J Faint Very Light Light

**CLARITY**

FL	IF	VS <sup>1-2</sup>	VS <sup>1-2</sup>	SI <sup>1-2</sup>	I <sup>1-3</sup>
Flawless	Internally Flawless	Very Very Slightly Included	Very Slightly Included	Slightly Included	Included



**ADDITIONAL GRADING INFORMATION**

Polish **EXCELLENT**  
Symmetry **EXCELLENT**  
Fluorescence **NONE**  
Inscription(s) **IGI LG768630668**  
Comments: As Grown - No indication of post-growth treatment.  
This Laboratory Grown Diamond was created by High Pressure High Temperature (HPHT) growth process.  
Type II



April 13, 2026  
IGI Report No LG768630668  
CUSHION MODIFIED BRILLIANT  
11.53 X 9.47 X 6.29 MM  
5.31 CARATS  
D  
FLAWLESS  
66.4%  
60%  
Medium to Slightly Thick (Faceted)  
Pointed  
EXCELLENT  
EXCELLENT  
NONE  
IGI LG768630668  
Comments: As Grown - No indication of post-growth treatment.  
This Laboratory Grown Diamond was created by High Pressure High Temperature (HPHT) growth process.  
Type II