



ELECTRONIC COPY

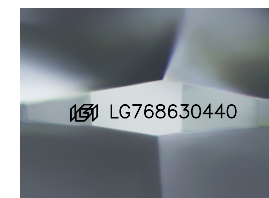
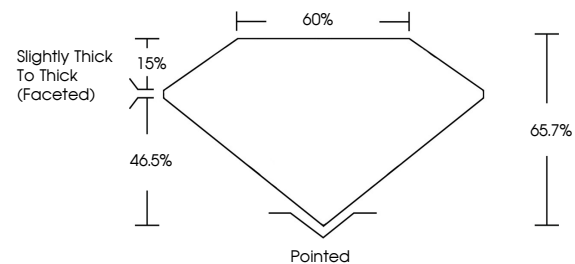
LG768630440
Report verification at igi.org



April 10, 2026
IGI Report Number **LG768630440**
Description **LABORATORY GROWN DIAMOND**
Shape and Cutting Style **CUSHION MODIFIED BRILLIANT**
Measurements **11.77 X 9.45 X 6.21 MM**
GRADING RESULTS
Carat Weight **5.34 CARATS**
Color Grade **D**
Clarity Grade **INTERNALLY FLAWLESS**

April 10, 2026
IGI Report Number **LG768630440**
Description **LABORATORY GROWN DIAMOND**
Shape and Cutting Style **CUSHION MODIFIED BRILLIANT**
Measurements **11.77 X 9.45 X 6.21 MM**

PROPORTIONS

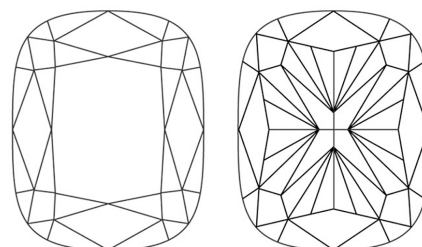


Sample Image Used

GRADING RESULTS

Carat Weight **5.34 CARATS**
Color Grade **D**
Clarity Grade **INTERNALLY FLAWLESS**

CLARITY CHARACTERISTICS



KEY TO SYMBOLS

Red symbols indicate internal characteristics.
Green symbols indicate external characteristics.

ADDITIONAL GRADING INFORMATION

Polish **EXCELLENT**
Symmetry **EXCELLENT**
Fluorescence **NONE**
Inscription(s) **IGI LG768630440**

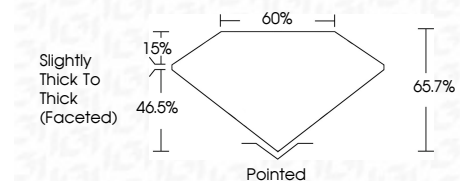
Comments: As Grown - No indication of post-growth treatment.
This Laboratory Grown Diamond was created by High Pressure High Temperature (HPHT) growth process.
Type II

COLOR

D E F G H I J Faint Very Light Light

CLARITY

FL	IF	VS ¹⁻²	VS ¹⁻²	SI ¹⁻²	I ¹⁻³
Flawless	Internally Flawless	Very Very Slightly Included	Very Slightly Included	Slightly Included	Included



ADDITIONAL GRADING INFORMATION

Polish **EXCELLENT**
Symmetry **EXCELLENT**
Fluorescence **NONE**
Inscription(s) **IGI LG768630440**
Comments: As Grown - No indication of post-growth treatment.
This Laboratory Grown Diamond was created by High Pressure High Temperature (HPHT) growth process.
Type II



IGI



April 10, 2026
IGI Report No LG768630440
CUSHION MODIFIED BRILLIANT
11.77 X 9.45 X 6.21 MM
5.34 CARATS
D
5.34 CARATS
D
65.7%
60%
Slightly Thick To Thick (Faceted)
Pointed
EXCELLENT
EXCELLENT
NONE
IGI LG768630440
As Grown - No indication of post-growth treatment.
This Laboratory Grown Diamond was created by High Pressure High Temperature (HPHT) growth process.
Type II