



**ELECTRONIC COPY**

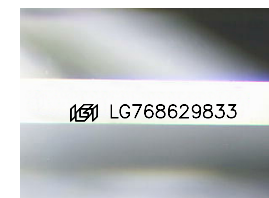
LG768629833  
Report verification at [igi.org](http://igi.org)



March 31, 2026  
IGI Report Number **LG768629833**  
Description **LABORATORY GROWN DIAMOND**

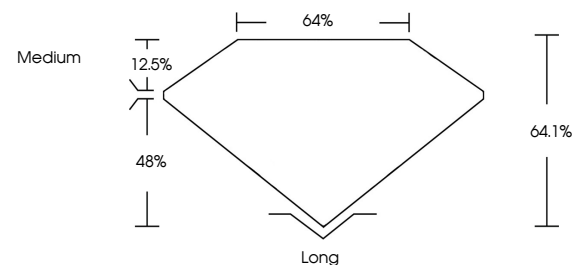
Shape and Cutting Style **EMERALD CUT**  
Measurements **10.88 X 7.53 X 4.83 MM**

**GRADING RESULTS**  
Carat Weight **4.01 CARATS**  
Color Grade **D**  
Clarity Grade **FLAWLESS**

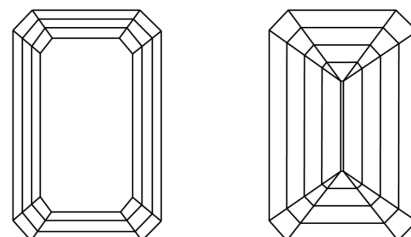


Sample Image Used

**PROPORTIONS**



**CLARITY CHARACTERISTICS**



**KEY TO SYMBOLS**

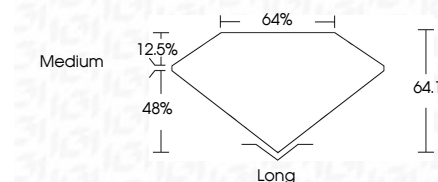
Red symbols indicate internal characteristics.  
Green symbols indicate external characteristics.

**COLOR**

D E F G H I J Faint Very Light Light

**CLARITY**

FL	IF	VS <sup>1-2</sup>	VS <sup>1-2</sup>	SI <sup>1-2</sup>	I <sup>1-3</sup>
Flawless	Internally Flawless	Very Very Slightly Included	Very Slightly Included	Slightly Included	Included



**ADDITIONAL GRADING INFORMATION**

Polish **EXCELLENT**  
Symmetry **EXCELLENT**  
Fluorescence **NONE**  
Inscription(s) **IGI LG768629833**  
Comments: As Grown - No indication of post-growth treatment.  
This Laboratory Grown Diamond was created by High Pressure High Temperature (HPHT) growth process.  
Type II



**IGI**

March 31, 2026  
IGI Report No LG768629833  
**EMERALD CUT**  
4.01 CARATS  
D  
FLAWLESS  
64.1%  
48%  
Medium  
Long  
EXCELLENT  
EXCELLENT  
NONE  
IGI LG768629833

Comments:  
As Grown - No indication of post-growth treatment.  
This Laboratory Grown Diamond was created by High Pressure High Temperature (HPHT) growth process.  
Type II

