



ELECTRONIC COPY

LG768629469 Report verification at igi.org



March 30, 2026 IGI Report Number LG768629469 Description LABORATORY GROWN DIAMOND Shape and Cutting Style CUSHION MODIFIED BRILLIANT Measurements 11.62 X 9.33 X 6.01 MM GRADING RESULTS Carat Weight 5.09 CARATS Color Grade D Clarity Grade FLAWLESS

LABORATORY GROWN DIAMOND REPORT

March 30, 2026 IGI Report Number LG768629469 Description LABORATORY GROWN DIAMOND Shape and Cutting Style CUSHION MODIFIED BRILLIANT Measurements 11.62 X 9.33 X 6.01 MM

GRADING RESULTS

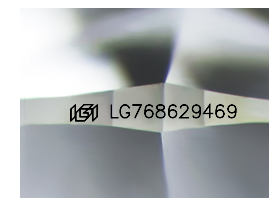
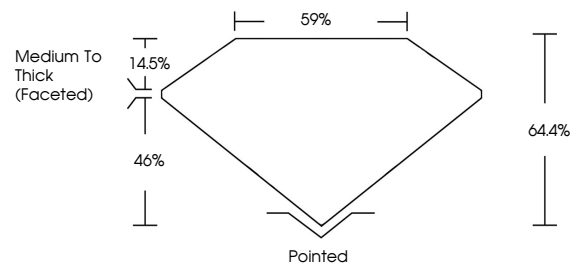
Carat Weight 5.09 CARATS Color Grade D Clarity Grade FLAWLESS

ADDITIONAL GRADING INFORMATION

Polish EXCELLENT Symmetry EXCELLENT Fluorescence NONE Inscription(s) IGI LG768629469

Comments: As Grown - No indication of post-growth treatment. This Laboratory Grown Diamond was created by High Pressure High Temperature (HPHT) growth process. Type II

PROPORTIONS



Sample Image Used

CLARITY CHARACTERISTICS



KEY TO SYMBOLS

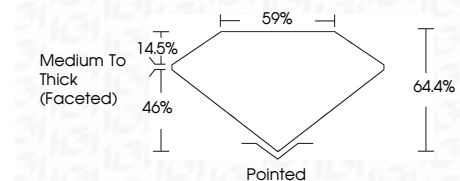
Red symbols indicate internal characteristics. Green symbols indicate external characteristics.

COLOR

D E F G H I J Faint Very Light Light

CLARITY

FL IF VS 1-2 VS 1-2 SI 1-2 I 1-3 Flawless Internally Flawless Very Very Slightly Included Very Slightly Included Slightly Included Included



ADDITIONAL GRADING INFORMATION

Polish EXCELLENT Symmetry EXCELLENT Fluorescence NONE Inscription(s) IGI LG768629469 Comments: As Grown - No indication of post-growth treatment. This Laboratory Grown Diamond was created by High Pressure High Temperature (HPHT) growth process. Type II



March 30, 2026 IGI Report No LG768629469 CUSHION MODIFIED BRILLIANT 5.09 CARATS D FLAWLESS 14.5% 46% 59% Medium To Thick (Faceted) Pointed EXCELLENT EXCELLENT NONE NONE IGI LG768629469 Comments: As Grown - No indication of post-growth treatment. This Laboratory Grown Diamond was created by High Pressure High Temperature (HPHT) growth process. Type II