



ELECTRONIC COPY

LG768629394
Report verification at igi.org



March 30, 2026
IGI Report Number **LG768629394**
Description **LABORATORY GROWN DIAMOND**

Shape and Cutting Style **CUT CORNERED
RECTANGULAR MODIFIED
BRILLIANT**

Measurements **11.14 X 8.09 X 5.29 MM**

GRADING RESULTS

Carat Weight **4.01 CARATS**
Color Grade **D**
Clarity Grade **FLAWLESS**

LABORATORY GROWN DIAMOND REPORT

March 30, 2026
IGI Report Number **LG768629394**
Description **LABORATORY GROWN DIAMOND**
Shape and Cutting Style **CUT CORNERED RECTANGULAR
MODIFIED BRILLIANT**
Measurements **11.14 X 8.09 X 5.29 MM**

GRADING RESULTS

Carat Weight **4.01 CARATS**
Color Grade **D**
Clarity Grade **FLAWLESS**

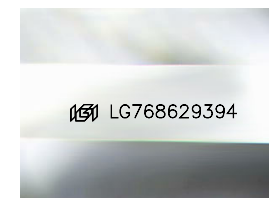
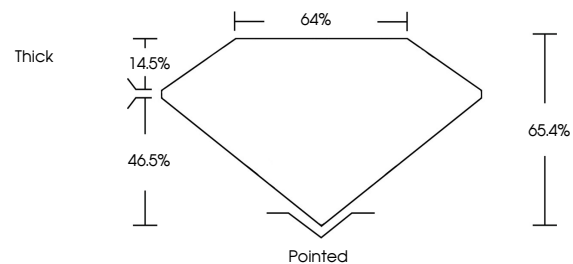
ADDITIONAL GRADING INFORMATION

Polish **EXCELLENT**
Symmetry **EXCELLENT**
Fluorescence **NONE**

Inscription(s) **IGI LG768629394**

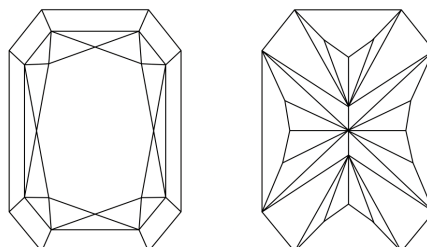
Comments: As Grown - No indication of post-growth treatment.
This Laboratory Grown Diamond was created by High Pressure High Temperature (HPHT) growth process.
Type II

PROPORTIONS



Sample Image Used

CLARITY CHARACTERISTICS



KEY TO SYMBOLS

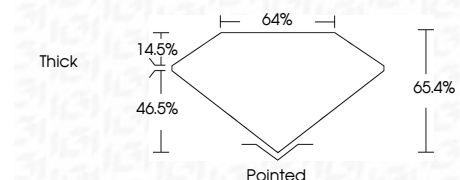
Red symbols indicate internal characteristics.
Green symbols indicate external characteristics.

COLOR

D E F G H I J Faint Very Light Light

CLARITY

FL	IF	VS ¹⁻²	VS ¹⁻²	SI ¹⁻²	I ¹⁻³
Flawless	Internally Flawless	Very Very Slightly Included	Very Slightly Included	Slightly Included	Included



ADDITIONAL GRADING INFORMATION

Polish **EXCELLENT**
Symmetry **EXCELLENT**
Fluorescence **NONE**
Inscription(s) **IGI LG768629394**

Comments: As Grown - No indication of post-growth treatment.
This Laboratory Grown Diamond was created by High Pressure High Temperature (HPHT) growth process.
Type II



March 30, 2026
IGI Report No LG768629394
CUT CORNERED RECT. MODIFIED BRILLIANT
4.01 CARATS
D
FLAWLESS
65.4%
64%
Thick
Pointed
EXCELLENT
EXCELLENT
NONE
IGI LG768629394
Comments: As Grown - No indication of post-growth treatment.
This Laboratory Grown Diamond was created by High Pressure High Temperature (HPHT) growth process.
Type II