



**ELECTRONIC COPY**

LG768629175  
Report verification at igi.org



March 26, 2026

IGI Report Number **LG768629175**

Description **LABORATORY GROWN DIAMOND**

Shape and Cutting Style **PRINCESS CUT**

Measurements **7.38 X 7.37 X 5.37 MM**

**GRADING RESULTS**

Carat Weight **2.50 CARATS**

Color Grade **D**

Clarity Grade **FLAWLESS**

**LABORATORY GROWN DIAMOND REPORT**

March 26, 2026

IGI Report Number **LG768629175**

Description **LABORATORY GROWN DIAMOND**

Shape and Cutting Style **PRINCESS CUT**

Measurements **7.38 X 7.37 X 5.37 MM**

**GRADING RESULTS**

Carat Weight **2.50 CARATS**

Color Grade **D**

Clarity Grade **FLAWLESS**

**ADDITIONAL GRADING INFORMATION**

Polish **EXCELLENT**

Symmetry **EXCELLENT**

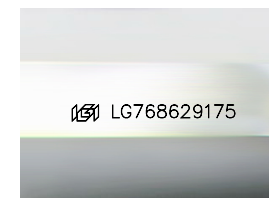
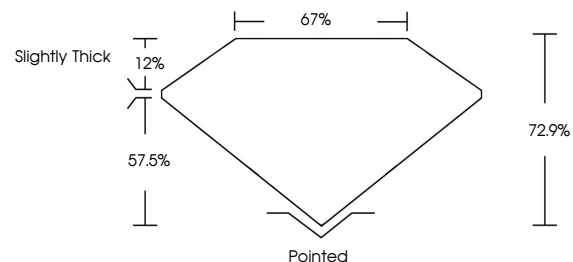
Fluorescence **NONE**

Inscription(s) **IGI LG768629175**

Comments: As Grown - No indication of post-growth treatment.

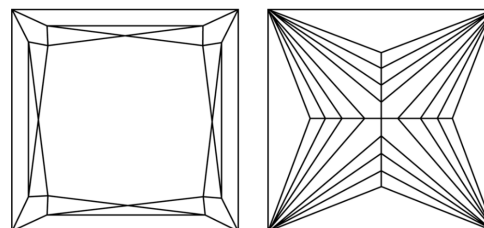
This Laboratory Grown Diamond was created by High Pressure High Temperature (HPHT) growth process. Type II

**PROPORTIONS**



Sample Image Used

**CLARITY CHARACTERISTICS**



**KEY TO SYMBOLS**

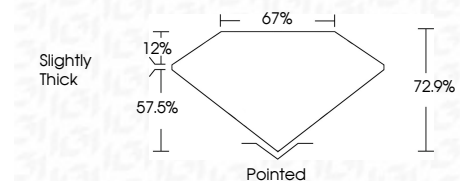
Red symbols indicate internal characteristics.  
Green symbols indicate external characteristics.

**COLOR**

D E F G H I J Faint Very Light Light

**CLARITY**

FL	IF	VS <sup>1-2</sup>	VS <sup>1-2</sup>	SI <sup>1-2</sup>	I <sup>1-3</sup>
Flawless	Internally Flawless	Very Very Slightly Included	Very Slightly Included	Slightly Included	Included



**ADDITIONAL GRADING INFORMATION**

Polish **EXCELLENT**

Symmetry **EXCELLENT**

Fluorescence **NONE**

Inscription(s) **IGI LG768629175**

Comments: As Grown - No indication of post-growth treatment.

This Laboratory Grown Diamond was created by High Pressure High Temperature (HPHT) growth process. Type II



**IGI**



March 26, 2026  
IGI Report No LG768629175  
PRINCESS CUT

2.50 CARATS  
D

7.38 X 7.37 X 5.37 MM  
Color Grade  
Clarity Grade  
Depth  
Table  
Girdle

FLAWLESS  
72.9%  
67%  
Slightly Thick

Pointed  
EXCELLENT  
EXCELLENT  
NONE  
NONE  
IGI LG768629175

Comments:  
As Grown - No indication of post-growth treatment.  
This Laboratory Grown Diamond was created by High Pressure High Temperature (HPHT) growth process.  
Type II