



**ELECTRONIC COPY**

LG768628608  
Report verification at [igi.org](http://igi.org)



March 23, 2026  
IGI Report Number **LG768628608**  
Description **LABORATORY GROWN DIAMOND**  
Shape and Cutting Style **ROUND BRILLIANT**  
Measurements **10.29 - 10.32 X 6.31 MM**  
**GRADING RESULTS**  
Carat Weight **4.10 CARATS**  
Color Grade **D**  
Clarity Grade **FLAWLESS**  
Cut Grade **IDEAL**

March 23, 2026  
IGI Report Number **LG768628608**  
Description **LABORATORY GROWN DIAMOND**  
Shape and Cutting Style **ROUND BRILLIANT**  
Measurements **10.29 - 10.32 X 6.31 MM**

**GRADING RESULTS**

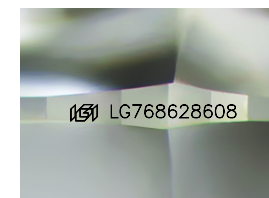
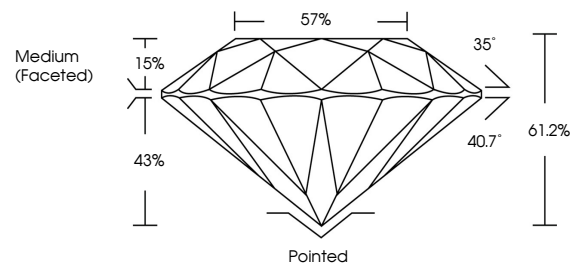
Carat Weight **4.10 CARATS**  
Color Grade **D**  
Clarity Grade **FLAWLESS**  
Cut Grade **IDEAL**

**ADDITIONAL GRADING INFORMATION**

Polish **EXCELLENT**  
Symmetry **EXCELLENT**  
Fluorescence **NONE**  
Inscription(s) **LG768628608**

Comments: HEARTS & ARROWS  
As Grown - No indication of post-growth treatment.  
This Laboratory Grown Diamond was created by High Pressure High Temperature (HPHT) growth process.  
Type II

**PROPORTIONS**



Sample Image Used

**CLARITY CHARACTERISTICS**



**KEY TO SYMBOLS**

Red symbols indicate internal characteristics.  
Green symbols indicate external characteristics.

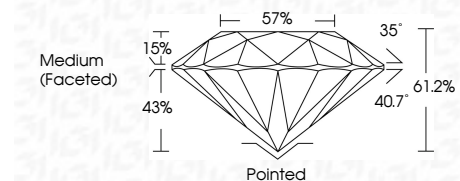


**COLOR**

D E F G H I J Faint Very Light Light

**CLARITY**

FL	IF	VS <sup>1-2</sup>	VS <sup>1-2</sup>	SI <sup>1-2</sup>	I <sup>1-3</sup>
Flawless	Internally Flawless	Very Very Slightly Included	Very Slightly Included	Slightly Included	Included



**ADDITIONAL GRADING INFORMATION**

Polish **EXCELLENT**  
Symmetry **EXCELLENT**  
Fluorescence **NONE**  
Inscription(s) **LG768628608**  
Comments: HEARTS & ARROWS  
As Grown - No indication of post-growth treatment.  
This Laboratory Grown Diamond was created by High Pressure High Temperature (HPHT) growth process.  
Type II



**IGI**

March 23, 2026  
IGI Report No **LG768628608**  
**ROUND BRILLIANT**

**4.10 CARATS**  
Carat Weight  
Color Grade **D**  
Clarity Grade **FLAWLESS**  
Cut Grade **IDEAL**  
Depth **61.2%**  
Table **57%**  
Girdle **Medium (Faceted)**

Culet **Pointed**  
Polish **EXCELLENT**  
Symmetry **EXCELLENT**  
Fluorescence **NONE**  
Inscriptions(s) **LG768628608**

Comments: **HEARTS & ARROWS**  
As Grown - No indication of post-growth treatment.  
This Laboratory Grown Diamond was created by High Pressure High Temperature (HPHT) growth process.  
Type II