



February 7, 2026

IGI Report Number **LG768626122**

ROUND BRILLIANT

LABORATORY GROWN DIAMOND

5.78 - 5.80 X 3.45 MM

Carat Weight **0.71 CARAT**

Color Grade **FANCY BROWN**

Clarity Grade **VS 2**

Cut Grade **EXCELLENT**

Polish **EXCELLENT**

Symmetry **EXCELLENT**

Fluorescence **NONE**

Inscription(s) **IGI LG768626122**

Comments: This Laboratory Grown Diamond was created by Chemical Vapor Deposition (CVD) growth process.

LABORATORY GROWN DIAMOND REPORT

February 7, 2026

IGI Report Number

LG768626122

Description

LABORATORY GROWN DIAMOND

Shape and Cutting Style

ROUND BRILLIANT

Measurements

5.78 - 5.80 X 3.45 MM

GRADING RESULTS

Carat Weight

0.71 CARAT

Color Grade

FANCY BROWN

Clarity Grade

VS 2

Cut Grade

EXCELLENT

ADDITIONAL GRADING INFORMATION

Polish

EXCELLENT

Symmetry

EXCELLENT

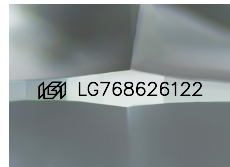
Fluorescence

NONE

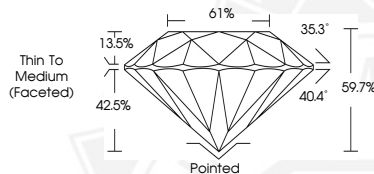
Inscription(s)

IGI LG768626122

Comments: This Laboratory Grown Diamond was created by Chemical Vapor Deposition (CVD) growth process.



Sample Image Used



February 7, 2026

IGI Report Number **LG768626122**

ROUND BRILLIANT

LABORATORY GROWN DIAMOND

5.78 - 5.80 X 3.45 MM

Carat Weight **0.71 CARAT**

Color Grade **FANCY BROWN**

Clarity Grade **VS 2**

Cut Grade **EXCELLENT**

Polish **EXCELLENT**

Symmetry **EXCELLENT**

Fluorescence **NONE**

Inscription(s) **IGI LG768626122**

Comments: This Laboratory Grown Diamond was created by Chemical Vapor Deposition (CVD) growth process.



THIS DOCUMENT WAS PRODUCED WITH THE FOLLOWING SECURITY MEASURES: SPECIAL DOCUMENT PAPER, INK SCREENS, WATERMARK, BACKGROUND DESIGNS, HOLOGRAM AND OTHER SECURITY FEATURES NOT LISTED AND DO EXCEED DOCUMENT SECURITY INDUSTRY GUIDELINES.