



January 27, 2026

**IGI Report Number** LG768626087  
**ROUND BRILLIANT**  
**LABORATORY GROWN DIAMOND**  
**5.76 - 5.79 X 3.55 MM**

**Carat Weight** 0.73 CARAT  
**Color Grade** FANCY LIGHT  
**YELLOW**  
**Clarity Grade** VVS 2  
**Cut Grade** IDEAL  
**Polish** EXCELLENT  
**Symmetry** EXCELLENT  
**Fluorescence** NONE  
**Inscription(s)** IGI LG768626087

**Comments:** As Grown - No indication of post-growth treatment. This Laboratory Grown Diamond was created by High Pressure High Temperature (HPHT) growth process.

**LABORATORY GROWN DIAMOND REPORT**

January 27, 2026  
IGI Report Number **LG768626087**  
Description **LABORATORY GROWN DIAMOND**  
Shape and Cutting Style **ROUND BRILLIANT**  
Measurements **5.76 - 5.79 X 3.55 MM**

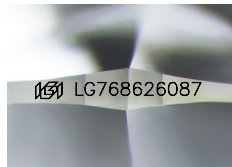
**GRADING RESULTS**

**Carat Weight** 0.73 CARAT  
**Color Grade** FANCY LIGHT YELLOW  
**Clarity Grade** VVS 2  
**Cut Grade** IDEAL

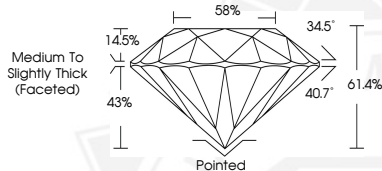
**ADDITIONAL GRADING INFORMATION**

**Polish** EXCELLENT  
**Symmetry** EXCELLENT  
**Fluorescence** NONE  
**Inscription(s)** IGI LG768626087

**Comments:** As Grown - No indication of post-growth treatment. This Laboratory Grown Diamond was created by High Pressure High Temperature (HPHT) growth process.



Sample Image Used



Medium To Slightly Thick (Faceted)



January 27, 2026

**IGI Report Number** LG768626087  
**ROUND BRILLIANT**  
**LABORATORY GROWN DIAMOND**  
**5.76 - 5.79 X 3.55 MM**

**Carat Weight** 0.73 CARAT  
**Color Grade** FANCY LIGHT  
**YELLOW**  
**Clarity Grade** VVS 2  
**Cut Grade** IDEAL  
**Polish** EXCELLENT  
**Symmetry** EXCELLENT  
**Fluorescence** NONE  
**Inscription(s)** IGI LG768626087

**Comments:** As Grown - No indication of post-growth treatment. This Laboratory Grown Diamond was created by High Pressure High Temperature (HPHT) growth process.



THIS DOCUMENT WAS PRODUCED WITH THE FOLLOWING SECURITY MEASURES: SPECIAL DOCUMENT PAPER, INK SCREENS, WATERMARK, BACKGROUND DESIGNS, HOLOGRAM AND OTHER SECURITY FEATURES NOT LISTED AND DO EXCEED DOCUMENT SECURITY INDUSTRY GUIDELINES.