



**ELECTRONIC COPY**

LG768625199  
Report verification at igi.org



February 2, 2026  
IGI Report Number **LG768625199**  
Description **LABORATORY GROWN DIAMOND**  
Shape and Cutting Style **ROUND BRILLIANT**  
Measurements **11.31 - 11.35 X 6.68 MM**  
**GRADING RESULTS**  
Carat Weight **5.31 CARATS**  
Color Grade **FANCY VIVID GREEN**  
Clarity Grade **VS 1**  
Cut Grade **EXCELLENT**

February 2, 2026  
IGI Report Number **LG768625199**  
Description **LABORATORY GROWN DIAMOND**  
Shape and Cutting Style **ROUND BRILLIANT**  
Measurements **11.31 - 11.35 X 6.68 MM**

**GRADING RESULTS**

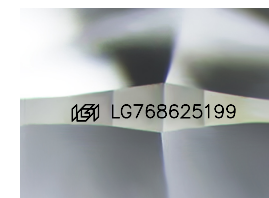
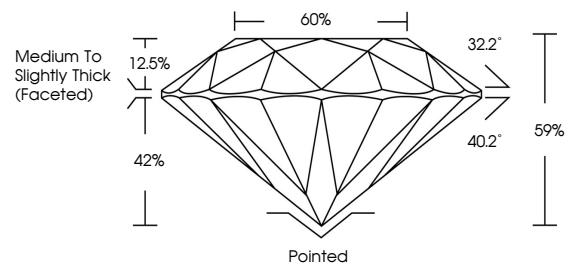
Carat Weight **5.31 CARATS**  
Color Grade **FANCY VIVID GREEN**  
Clarity Grade **VS 1**  
Cut Grade **EXCELLENT**

**ADDITIONAL GRADING INFORMATION**

Polish **EXCELLENT**  
Symmetry **EXCELLENT**  
Fluorescence **NONE**  
Inscription(s) **IGI LG768625199**

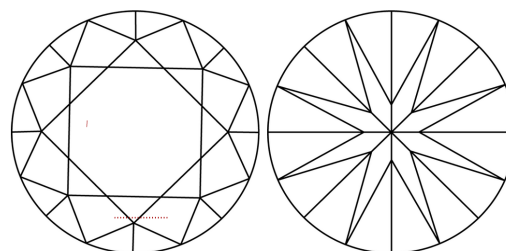
Comments: This Laboratory Grown Diamond was created by Chemical Vapor Deposition (CVD) growth process.  
Indications of post-growth treatment.

**PROPORTIONS**



Sample Image Used

**CLARITY CHARACTERISTICS**



**KEY TO SYMBOLS**

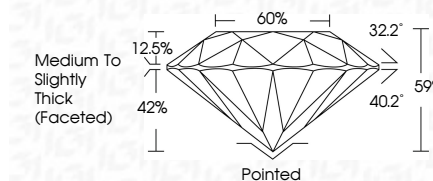
Red symbols indicate internal characteristics.  
Green symbols indicate external characteristics.

**COLOR**

D E F G H I J Faint Very Light Light

**CLARITY**

FL	IF	VS <sup>1-2</sup>	VS <sup>1-2</sup>	SI <sup>1-2</sup>	I <sup>1-3</sup>
Flawless	Internally Flawless	Very Very Slightly Included	Very Slightly Included	Slightly Included	Included



**ADDITIONAL GRADING INFORMATION**

Polish **EXCELLENT**  
Symmetry **EXCELLENT**  
Fluorescence **NONE**  
Inscription(s) **IGI LG768625199**  
Comments: This Laboratory Grown Diamond was created by Chemical Vapor Deposition (CVD) growth process.  
Indications of post-growth treatment.



February 2, 2026  
IGI Report No LG768625199  
ROUND BRILLIANT  
11.31 - 11.35 X 6.68 MM  
5.31 CARATS  
FANCY VIVID GREEN  
VS 1  
EXCELLENT  
59%  
60%  
Medium To Slightly Thick (Faceted)  
Pointed  
EXCELLENT  
EXCELLENT  
NONE  
IGI LG768625199  
Comments: This Laboratory Grown Diamond was created by Chemical Vapor Deposition (CVD) growth process.  
Indications of post-growth treatment.