



ELECTRONIC COPY

LG768622421
Report verification at igi.org



February 13, 2026

IGI Report Number **LG768622421**

Description **LABORATORY GROWN DIAMOND**

Shape and Cutting Style **ROUND BRILLIANT**

Measurements **8.43 - 8.48 X 5.24 MM**

GRADING RESULTS

Carat Weight **2.31 CARATS**

Color Grade **E**

Clarity Grade **SI 1**

Cut Grade **IDEAL**

February 13, 2026

IGI Report Number **LG768622421**

Description **LABORATORY GROWN DIAMOND**

Shape and Cutting Style **ROUND BRILLIANT**

Measurements **8.43 - 8.48 X 5.24 MM**

GRADING RESULTS

Carat Weight **2.31 CARATS**

Color Grade **E**

Clarity Grade **SI 1**

Cut Grade **IDEAL**

ADDITIONAL GRADING INFORMATION

Polish **EXCELLENT**

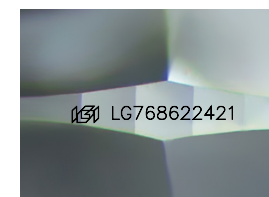
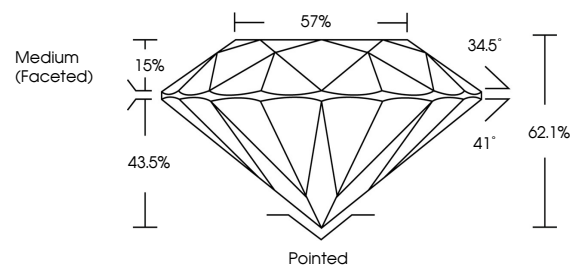
Symmetry **EXCELLENT**

Fluorescence **NONE**

Inscription(s) **IGI LG768622421**

Comments: This Laboratory Grown Diamond was created by Chemical Vapor Deposition (CVD) growth process. Type IIa

PROPORTIONS



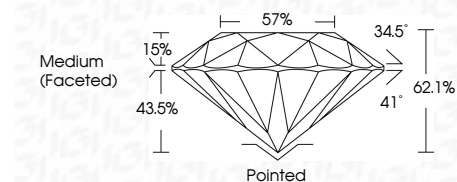
Sample Image Used

COLOR

D E F G H I J Faint Very Light Light

CLARITY

| FL | IF | VS ¹⁻² | VS ¹⁻² | SI ¹⁻² | I ¹⁻³ |
|----------|---------------------|-----------------------------|------------------------|-------------------|------------------|
| Flawless | Internally Flawless | Very Very Slightly Included | Very Slightly Included | Slightly Included | Included |



ADDITIONAL GRADING INFORMATION

Polish **EXCELLENT**

Symmetry **EXCELLENT**

Fluorescence **NONE**

Inscription(s) **IGI LG768622421**

Comments: This Laboratory Grown Diamond was created by Chemical Vapor Deposition (CVD) growth process. Type IIa



IGI



| | | | | |
|-----------------------|---------------------------|------------------|-------|-----------------|
| February 13, 2026 | IGI Report No LG768622421 | 2.31 CARATS | E | Pointed |
| 8.43 - 8.48 X 5.24 MM | ROUND BRILLIANT | SI 1 | IDEAL | EXCELLENT |
| Carat Weight | | 62.1% | 57% | EXCELLENT |
| Color Grade | | Medium (Faceted) | | NONE |
| Clarity Grade | | | | IGI LG768622421 |
| Cut Grade | | | | |
| Depth | | | | |
| Table | | | | |
| Girdle | | | | |
| Polish | | | | |
| Symmetry | | | | |
| Fluorescence | | | | |
| Inscription(s) | | | | |

Comments: This Laboratory Grown Diamond was created by Chemical Vapor Deposition (CVD) growth process. Type IIa