



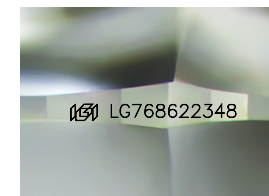
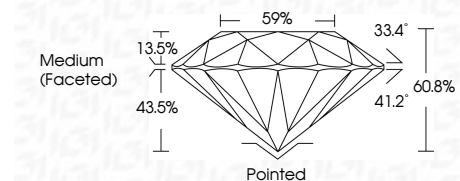
**ELECTRONIC COPY**

LG768622348  
Report verification at [igi.org](http://igi.org)

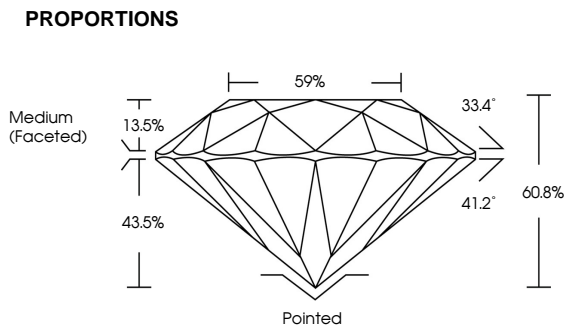


February 12, 2026  
IGI Report Number **LG768622348**  
Description **LABORATORY GROWN DIAMOND**  
Shape and Cutting Style **ROUND BRILLIANT**  
Measurements **8.51 - 8.55 X 5.19 MM**

**GRADING RESULTS**  
Carat Weight **2.30 CARATS**  
Color Grade **F**  
Clarity Grade **VVS 2**  
Cut Grade **IDEAL**



Sample Image Used



**COLOR**

D E F G H I J Faint Very Light Light

**CLARITY**

FL	IF	VVS <sup>1-2</sup>	VS <sup>1-2</sup>	SI <sup>1-2</sup>	I <sup>1-3</sup>
Flawless	Internally Flawless	Very Very Slightly Included	Very Slightly Included	Slightly Included	Included

**ADDITIONAL GRADING INFORMATION**

Polish **EXCELLENT**  
Symmetry **EXCELLENT**  
Fluorescence **NONE**  
Inscription(s) **IGI LG768622348**  
Comments: This Laboratory Grown Diamond was created by Chemical Vapor Deposition (CVD) growth process. Type IIa



February 12, 2026  
IGI Report No LG768622348  
**ROUND BRILLIANT**  
8.51 - 8.55 X 5.19 MM  
2.30 CARATS  
Color Grade **F**  
Clarity Grade **VVS 2**  
Cut Grade **IDEAL**  
Depth **60.8%**  
Table **59%**  
Girdle **Medium (Faceted)**  
Culet **Pointed**  
Polish **EXCELLENT**  
Symmetry **EXCELLENT**  
Fluorescence **NONE**  
Inscription(s) **IGI LG768622348**  
Comments: This Laboratory Grown Diamond was created by Chemical Vapor Deposition (CVD) growth process. Type IIa