



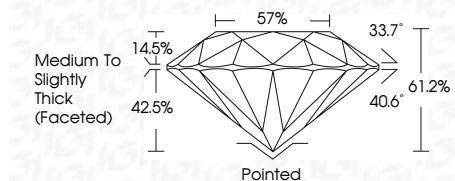
**ELECTRONIC COPY**

LG768621596  
Report verification at igi.org



February 2, 2026  
IGI Report Number **LG768621596**  
Description **LABORATORY GROWN DIAMOND**  
Shape and Cutting Style **ROUND BRILLIANT**  
Measurements **8.77 - 8.82 X 5.38 MM**

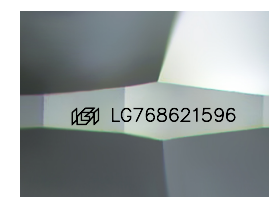
**GRADING RESULTS**  
Carat Weight **2.56 CARATS**  
Color Grade **F**  
Clarity Grade **VS 2**  
Cut Grade **IDEAL**



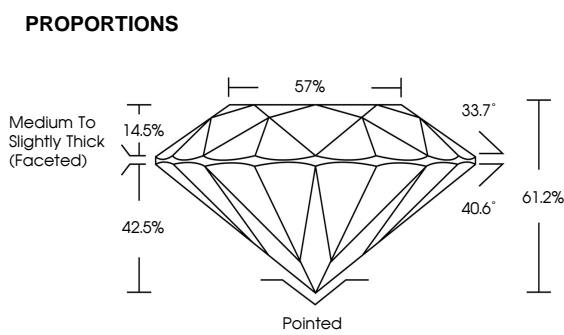
**ADDITIONAL GRADING INFORMATION**  
Polish **EXCELLENT**  
Symmetry **EXCELLENT**  
Fluorescence **NONE**  
Inscription(s) **IGI LG768621596**  
Comments: This Laboratory Grown Diamond was created by Chemical Vapor Deposition (CVD) growth process. Type IIa



February 2, 2026  
IGI Report No LG768621596  
**ROUND BRILLIANT**  
8.77 - 8.82 X 5.38 MM  
2.56 CARATS  
Color Grade **F**  
Clarity Grade **VS 2**  
Cut Grade **IDEAL**  
Depth **61.2%**  
Table **14.5%**  
Girdle **Medium To Slightly Thick (Faceted)**  
Culet **Pointed**  
Polish **EXCELLENT**  
Symmetry **EXCELLENT**  
Fluorescence **NONE**  
Inscriptions(s) **IGI LG768621596**  
Comments: This Laboratory Grown Diamond was created by Chemical Vapor Deposition (CVD) growth process. Type IIa



Sample Image Used



**COLOR**

D	E	F	G	H	I	J	Faint	Very Light	Light
---	---	---	---	---	---	---	-------	------------	-------

**CLARITY**

FL	IF	VS <sup>1-2</sup>	VS <sup>1-2</sup>	SI <sup>1-2</sup>	I <sup>1-3</sup>
Flawless	Internally Flawless	Very Very Slightly Included	Very Slightly Included	Slightly Included	Included



February 2, 2026  
IGI Report Number **LG768621596**  
Description **LABORATORY GROWN DIAMOND**  
Shape and Cutting Style **ROUND BRILLIANT**  
Measurements **8.77 - 8.82 X 5.38 MM**  
**GRADING RESULTS**  
Carat Weight **2.56 CARATS**  
Color Grade **F**  
Clarity Grade **VS 2**  
Cut Grade **IDEAL**  
**ADDITIONAL GRADING INFORMATION**  
Polish **EXCELLENT**  
Symmetry **EXCELLENT**  
Fluorescence **NONE**  
Inscription(s) **IGI LG768621596**  
Comments: This Laboratory Grown Diamond was created by Chemical Vapor Deposition (CVD) growth process. Type IIa