

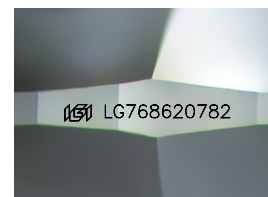
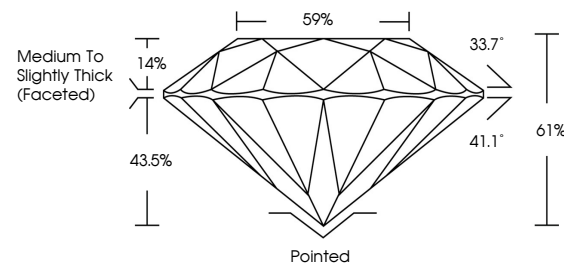


**ELECTRONIC COPY**

## LABORATORY GROWN DIAMOND REPORT

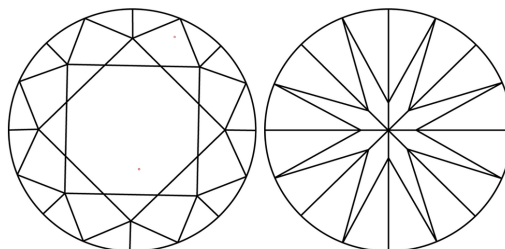
LG768620782  
Report verification at [igi.org](https://igi.org)

## PROPORTIONS



Sample Image Used

## CLARITY CHARACTERISTICS



## KEY TO SYMBOLS

Red symbols indicate internal characteristics.  
Green symbols indicate external characteristics.

## COLOR

D E F G H I J Faint Very Light Light

## CLARITY

FL	IF	VVS <sup>1-2</sup>	VS <sup>1-2</sup>	SI <sup>1-2</sup>	I <sup>1-3</sup>
Flawless	Internally Flawless	Very Very Slightly Included	Very Slightly Included	Slightly Included	Included

## LABORATORY GROWN DIAMOND REPORT



January 20, 2026

IGI Report Number **LG768620782**Description **LABORATORY GROWN DIAMOND**Shape and Cutting Style **ROUND BRILLIANT**

Measurements 6.53 - 6.56 X 3.99 MM

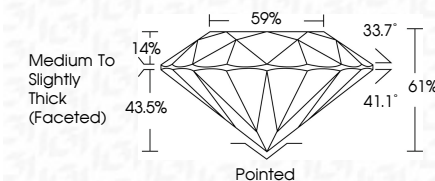
## GRADING RESULTS

Carat Weight 1.05 CARAT

Color Grade E

Clarity Grade **VS 2**

Cut Grade **IDEAL**



### ADDITIONAL GRADING INFORMATION

Polish EXCELLENT

Symmetry **EXCELLENT**Fluorescence **NONE**Inscription(s)  LG768620782

Comments: This Laboratory Grown Diamond was created by Chemical Vapor Deposition (CVD) growth process.  
Type IIa



© IGI 2020, International Gemological Institute

FD - 10 20



THIS DOCUMENT WAS PRODUCED WITH THE FOLLOWING SECURITY MEASURES: SPECIAL DOCUMENT PAPER, INK SCREENS, WATERMARK, BACKGROUND DESIGNS, HOLOGRAM AND OTHER SECURITY FEATURES NOT LISTED AND DO EXCEED DOCUMENT SECURITY INDUSTRY GUIDELINES

**www.igi.org**

January 20, 2026  
IGI Report No LG768620782  
ROUND BRILLIANT

6.63 - 6.66 X 3.99 MM		1.05 CARAT
Carat Weight		
Color Grade	VVS 2	IDEAL
Clarity Grade	01%	59%
Cut Grade	Medium to Slightly Thick (faceted)	
Depth		Pointed
Table		EXCELLENT
Girdle		EXCELLENT
Culet		NONE
Polish		EXCELLENT
Symmetry		EXCELLENT
Fluorescence		NONE
Measurements		6.63 - 6.66 X 3.99 MM

**Comments:**  
This Laboratory Grown Diamond was created by Chemical Vapor Deposition (CVD) growth process.