



**LABORATORY GROWN DIAMOND REPORT**

February 3, 2026  
 IGI Report Number **LG768617052**  
 Description **LABORATORY GROWN DIAMOND**  
 Shape and Cutting Style **OVAL BRILLIANT**  
 Measurements **7.36 X 5.27 X 3.30 MM**

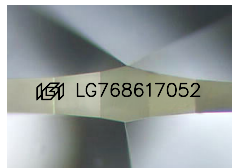
**GRADING RESULTS**

Carat Weight **0.83 CARAT**  
 Color Grade **E**  
 Clarity Grade **VVS 2**

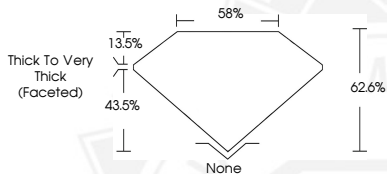
**ADDITIONAL GRADING INFORMATION**

Polish **VERY GOOD**  
 Symmetry **VERY GOOD**  
 Fluorescence **NONE**  
 Inscription(s) **IGI LG768617052**

Comments: This Laboratory Grown Diamond was created by Chemical Vapor Deposition (CVD) growth process. Type IIa



Sample Image Used



February 3, 2026  
 IGI Report Number **LG768617052**  
**OVAL BRILLIANT**  
**LABORATORY GROWN DIAMOND**  
**7.36 X 5.27 X 3.30 MM**  
 Carat Weight **0.83 CARAT**  
 Color Grade **E**  
 Clarity Grade **VVS 2**  
 Polish **VERY GOOD**  
 Symmetry **VERY GOOD**  
 Fluorescence **NONE**  
 Inscription(s) **IGI LG768617052**

Comments: This Laboratory Grown Diamond was created by Chemical Vapor Deposition (CVD) growth process. Type IIa



February 3, 2026  
 IGI Report Number **LG768617052**  
**OVAL BRILLIANT**  
**LABORATORY GROWN DIAMOND**  
**7.36 X 5.27 X 3.30 MM**  
 Carat Weight **0.83 CARAT**  
 Color Grade **E**  
 Clarity Grade **VVS 2**  
 Polish **VERY GOOD**  
 Symmetry **VERY GOOD**  
 Fluorescence **NONE**  
 Inscription(s) **IGI LG768617052**

Comments: This Laboratory Grown Diamond was created by Chemical Vapor Deposition (CVD) growth process. Type IIa



THIS DOCUMENT WAS PRODUCED WITH THE FOLLOWING SECURITY MEASURES: SPECIAL DOCUMENT PAPER, INK SCREENS, WATERMARK, BACKGROUND DESIGNS, HOLOGRAM AND OTHER SECURITY FEATURES NOT LISTED AND DO EXCEED DOCUMENT SECURITY INDUSTRY GUIDELINES.