



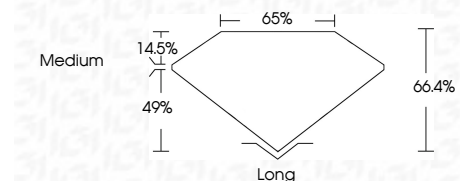
**ELECTRONIC COPY**

LG768615453  
Report verification at igi.org



January 21, 2026  
IGI Report Number **LG768615453**  
Description **LABORATORY GROWN DIAMOND**  
Shape and Cutting Style **EMERALD CUT**  
Measurements **10.03 X 6.79 X 4.51 MM**

**GRADING RESULTS**  
Carat Weight **3.08 CARATS**  
Color Grade **D**  
Clarity Grade **VVS 1**



**ADDITIONAL GRADING INFORMATION**  
Polish **EXCELLENT**  
Symmetry **EXCELLENT**  
Fluorescence **NONE**  
Inscription(s) **IGI LG768615453**  
Comments: This Laboratory Grown Diamond was created by Chemical Vapor Deposition (CVD) growth process. Type IIa



January 21, 2026  
IGI Report No. LG768615453  
**EMERALD CUT**  
3.08 CARATS  
D  
3.08 CARATS  
D  
10.03 X 6.79 X 4.51 MM  
Color Grade  
VVS 1  
66.4%  
49%  
Medium  
Long  
EXCELLENT  
EXCELLENT  
NONE  
IGI LG768615453  
Comments: This Laboratory Grown Diamond was created by Chemical Vapor Deposition (CVD) growth process. Type IIa

**LABORATORY GROWN DIAMOND REPORT**

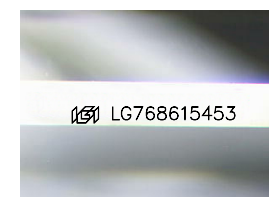
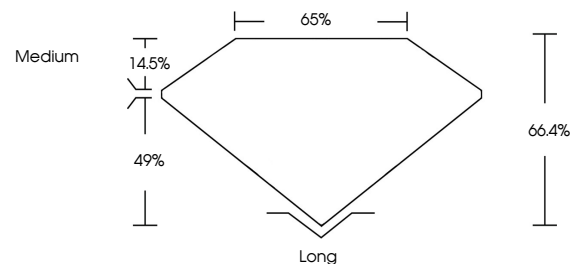
January 21, 2026  
IGI Report Number **LG768615453**  
Description **LABORATORY GROWN DIAMOND**  
Shape and Cutting Style **EMERALD CUT**  
Measurements **10.03 X 6.79 X 4.51 MM**

**GRADING RESULTS**  
Carat Weight **3.08 CARATS**  
Color Grade **D**  
Clarity Grade **VVS 1**

**ADDITIONAL GRADING INFORMATION**  
Polish **EXCELLENT**  
Symmetry **EXCELLENT**  
Fluorescence **NONE**  
Inscription(s) **IGI LG768615453**

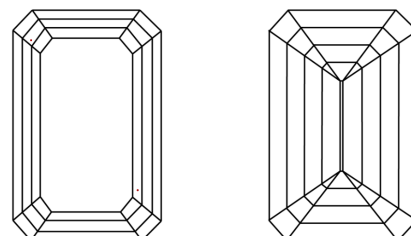
Comments: This Laboratory Grown Diamond was created by Chemical Vapor Deposition (CVD) growth process. Type IIa

**PROPORTIONS**



Sample Image Used

**CLARITY CHARACTERISTICS**



**KEY TO SYMBOLS**

Red symbols indicate internal characteristics.  
Green symbols indicate external characteristics.

**COLOR**

D E F G H I J Faint Very Light Light

**CLARITY**

FL	IF	VVS <sup>1-2</sup>	VS <sup>1-2</sup>	SI <sup>1-2</sup>	I <sup>1-3</sup>
Flawless	Internally Flawless	Very Very Slightly Included	Very Slightly Included	Slightly Included	Included

