



ELECTRONIC COPY

LG768613050
Report verification at igi.org



January 21, 2026

IGI Report Number **LG768613050**

Description **LABORATORY GROWN DIAMOND**

Shape and Cutting Style **CUT CORNERED
RECTANGULAR MODIFIED
BRILLIANT**

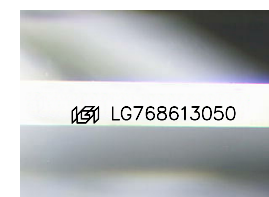
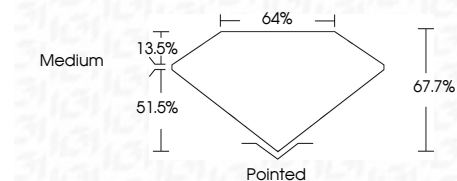
Measurements **11.18 X 7.44 X 5.04 MM**

GRADING RESULTS

Carat Weight **3.58 CARATS**

Color Grade **D**

Clarity Grade **VS 1**



Sample Image Used

ADDITIONAL GRADING INFORMATION

Polish **EXCELLENT**

Symmetry **EXCELLENT**

Fluorescence **NONE**

Inscription(s) **IGI LG768613050**

Comments: This Laboratory Grown Diamond was created by Chemical Vapor Deposition (CVD) growth process. Type IIa



IGI

January 21, 2026	IGI Report No LG768613050	CUT CORNERED RECT. MODIFIED BRILLIANT	3.58 CARATS	D	VS 1	67.7%	51.5%	Medium	Pointed	EXCELLENT	EXCELLENT	NONE	IGI LG768613050
11.18 X 7.44 X 5.04 MM	Carat Weight	Color Grade	Clarity Grade	Table	Depth	Graile	Culet	Polish	Symmetry	Fluorescence	Inscription(s)	Comments: This Laboratory Grown Diamond was created by Chemical Vapor Deposition (CVD) growth process. Type IIa	

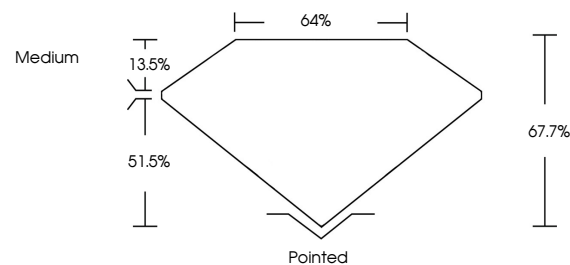
COLOR

D E F G H I J Faint Very Light Light

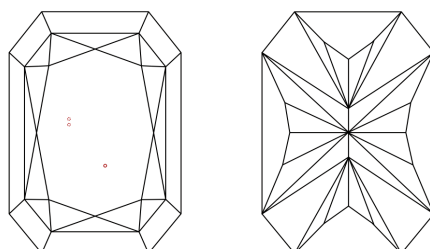
CLARITY

FL	IF	VS ¹⁻²	VS ¹⁻²	SI ¹⁻²	I ¹⁻³
Flawless	Internally Flawless	Very Very Slightly Included	Very Slightly Included	Slightly Included	Included

PROPORTIONS



CLARITY CHARACTERISTICS



KEY TO SYMBOLS

Red symbols indicate internal characteristics.
Green symbols indicate external characteristics.

