



**ELECTRONIC COPY**

LG768610361  
Report verification at igi.org



January 24, 2026

IGI Report Number **LG768610361**

Description **LABORATORY GROWN DIAMOND**

Shape and Cutting Style **ROUND BRILLIANT**

Measurements **8.11 - 8.16 X 5.09 MM**

**GRADING RESULTS**

Carat Weight **2.10 CARATS**

Color Grade **E**

Clarity Grade **VS 1**

Cut Grade **EXCELLENT**

January 24, 2026  
IGI Report Number **LG768610361**  
Description **LABORATORY GROWN DIAMOND**  
Shape and Cutting Style **ROUND BRILLIANT**  
Measurements **8.11 - 8.16 X 5.09 MM**

**GRADING RESULTS**

Carat Weight **2.10 CARATS**

Color Grade **E**

Clarity Grade **VS 1**

Cut Grade **EXCELLENT**

**ADDITIONAL GRADING INFORMATION**

Polish **EXCELLENT**

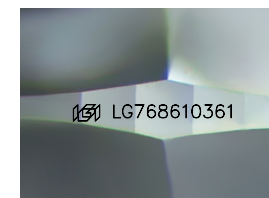
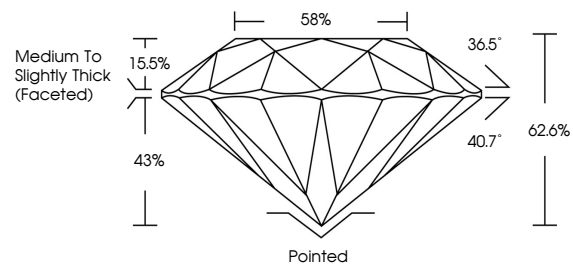
Symmetry **EXCELLENT**

Fluorescence **NONE**

Inscription(s) **LG768610361**

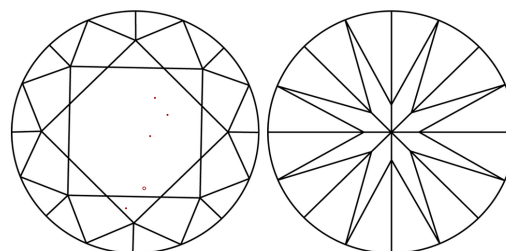
Comments: This Laboratory Grown Diamond was created by Chemical Vapor Deposition (CVD) growth process.  
Type IIa

**PROPORTIONS**



Sample Image Used

**CLARITY CHARACTERISTICS**



**KEY TO SYMBOLS**

Red symbols indicate internal characteristics.  
Green symbols indicate external characteristics.

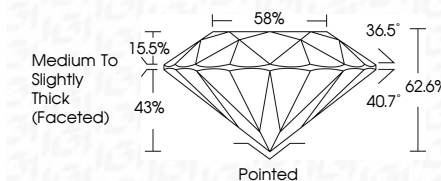
**COLOR**

D E F G H I J Faint Very Light Light

**CLARITY**

FL IF VS<sup>1-2</sup> VS<sup>1-2</sup> SI<sup>1-2</sup> I<sup>1-3</sup>

Flawless Internally Flawless Very Very Slightly Included Very Slightly Included Slightly Included Included



**ADDITIONAL GRADING INFORMATION**

Polish **EXCELLENT**

Symmetry **EXCELLENT**

Fluorescence **NONE**

Inscription(s) **LG768610361**

Comments: This Laboratory Grown Diamond was created by Chemical Vapor Deposition (CVD) growth process.  
Type IIa



**IGI**



January 24, 2026  
IGI Report No LG768610361  
ROUND BRILLIANT  
8.11 - 8.16 X 5.09 MM  
2.10 CARATS  
E  
EXCELLENT  
VS 1  
62.6%  
58%  
Medium To Slightly Thick (Faceted)  
Pointed  
EXCELLENT  
EXCELLENT  
NONE  
NONE  
IGI LG768610361  
Inscription(s)  
Comments: This Laboratory Grown Diamond was created by Chemical Vapor Deposition (CVD) growth process.  
Type IIa