



ELECTRONIC COPY

LABORATORY GROWN DIAMOND REPORT

LG768607045
Report verification at igi.org

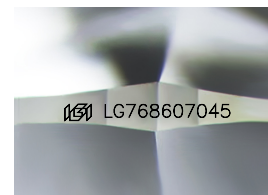
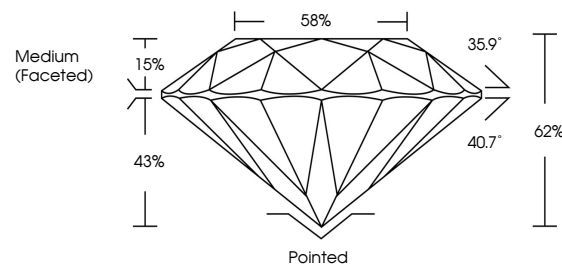
| | |
|-------------------------|--------------------------|
| January 26, 2026 | |
| IGI Report Number | LG768607045 |
| Description | LABORATORY GROWN DIAMOND |
| Shape and Cutting Style | ROUND BRILLIANT |
| Measurements | 8.65 - 8.68 X 5.37 MM |
| GRADING RESULTS | |
| Carat Weight | 2.52 CARATS |
| Color Grade | E |
| Clarity Grade | VVS 2 |
| Cut Grade | IDEAL |

ADDITIONAL GRADING INFORMATION

| | |
|----------------|----------------|
| Polish | EXCELLENT |
| Symmetry | EXCELLENT |
| Fluorescence | NONE |
| Inscription(s) | 15 LG768607045 |

Comments: This Laboratory Grown Diamond was created by Chemical Vapor Deposition (CVD) growth process.
Type IIa

PROPORTIONS



Sample Image Used

COLOR

D E F G H I J Faint Very Light Light

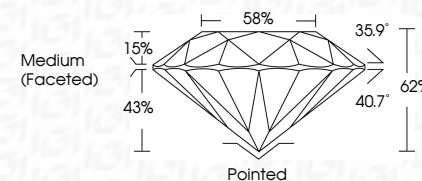
CLARITY

| FL | IF | VVS ¹⁻² | VS ¹⁻² | SI ¹⁻² | I ¹⁻³ |
|----------|---------------------|-----------------------------|------------------------|-------------------|------------------|
| Flawless | Internally Flawless | Very Very Slightly Included | Very Slightly Included | Slightly Included | Included |

LABORATORY GROWN DIAMOND REPORT



| | |
|-------------------------|--------------------------|
| January 26, 2026 | |
| IGI Report Number | LG768607045 |
| Description | LABORATORY GROWN DIAMOND |
| Shape and Cutting Style | ROUND BRILLIANT |
| Measurements | 8.65 - 8.68 X 5.37 MM |
| GRADING RESULTS | |
| Carat Weight | 2.52 CARATS |
| Color Grade | E |
| Clarity Grade | VVS 2 |
| Cut Grade | IDEAL |



ADDITIONAL GRADING INFORMATION

| | |
|---|---|
| Polish | EXCELLENT |
| Symmetry | EXCELLENT |
| Fluorescence | NONE |
| Inscription(s) |  LG768607045 |
| <p>Comments: This Laboratory Grown Diamond was created by Chemical Vapor Deposition (CVD) growth process.</p> <p>Type IIa</p> | |



© IGI 2020, International Gemological Institute

FD - 10 20



THIS DOCUMENT WAS PRODUCED WITH THE FOLLOWING SECURITY MEASURES: SPECIAL DOCUMENT PAPER, INK SCREENS, WATERMARK, BACKGROUND DESIGNS, HOLOGRAM AND OTHER SECURITY FEATURES NOT LISTED AND DO EXCEED DOCUMENT SECURITY INDUSTRY GUIDELINES

www.igi.org

January 26, 2026
IGI Report No. IG76

GL Report No LG76
POLIND BRILLIANT

ROUND BRILLIANT

8.65 - 8.68 X 5.37 MM
2.52 CARATS

| Catal Weight | 752 CARBIS |
|--------------|------------|
| Color Grade | E |

| | |
|---------------|-----|
| | WS2 |
| Clarity Grade | |

IDEAL

| | |
|-------|-----|
| Depth | 62% |
| Table | 58% |

Girdle

| | Pointed | Excellent |
|--------|---------|-----------|
| Culet | | |
| Polish | | |

| | |
|-----------|-----------|
| Excellent | Excellent |
| Symmetry | Symmetry |

| Fluorescence | NONE |
|--------------|------|
| Fluorescence | NONE |

Inscription(s)
1991 LG/888U/046

Comments:
This Laboratory Grown Diamond was

created by Chemical Vapor Deposition (CVD) growth process

Type IIa