



ELECTRONIC COPY

LG768606268
Report verification at igi.org



January 26, 2026
IGI Report Number **LG768606268**
Description **LABORATORY GROWN DIAMOND**
Shape and Cutting Style **PRINCESS CUT**
Measurements **8.73 X 8.31 X 5.84 MM**
GRADING RESULTS
Carat Weight **3.84 CARATS**
Color Grade **D**
Clarity Grade **VVS 2**

January 26, 2026
IGI Report Number **LG768606268**
Description **LABORATORY GROWN DIAMOND**
Shape and Cutting Style **PRINCESS CUT**
Measurements **8.73 X 8.31 X 5.84 MM**

GRADING RESULTS

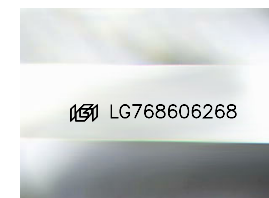
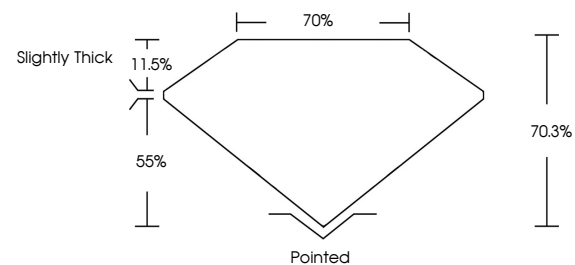
Carat Weight **3.84 CARATS**
Color Grade **D**
Clarity Grade **VVS 2**

ADDITIONAL GRADING INFORMATION

Polish **EXCELLENT**
Symmetry **EXCELLENT**
Fluorescence **NONE**
Inscription(s) **IGI LG768606268**

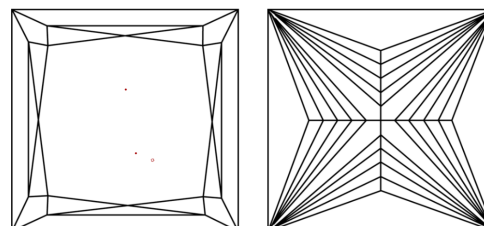
Comments: This Laboratory Grown Diamond was created by Chemical Vapor Deposition (CVD) growth process. Type IIa

PROPORTIONS



Sample Image Used

CLARITY CHARACTERISTICS



KEY TO SYMBOLS

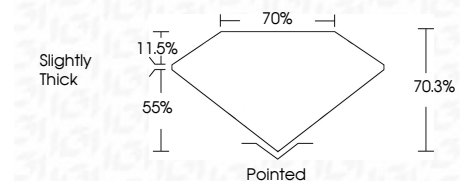
Red symbols indicate internal characteristics.
Green symbols indicate external characteristics.

COLOR

D E F G H I J Faint Very Light Light

CLARITY

FL	IF	VVS ¹⁻²	VS ¹⁻²	SI ¹⁻²	I ¹⁻³
Flawless	Internally Flawless	Very Very Slightly Included	Very Slightly Included	Slightly Included	Included



ADDITIONAL GRADING INFORMATION

Polish **EXCELLENT**
Symmetry **EXCELLENT**
Fluorescence **NONE**
Inscription(s) **IGI LG768606268**
Comments: This Laboratory Grown Diamond was created by Chemical Vapor Deposition (CVD) growth process. Type IIa



January 26, 2026
IGI Report No LG768606268
PRINCESS CUT
8.73 X 8.31 X 5.84 MM
3.84 CARATS
D
VVS 2
70.3%
70%
Slightly Thick
Pointed
EXCELLENT
EXCELLENT
NONE
IGI LG768606268
Comments: This Laboratory Grown Diamond was created by Chemical Vapor Deposition (CVD) growth process. Type IIa