



LABORATORY GROWN DIAMOND REPORT

January 27, 2026
 IGI Report Number **LG768601763**
 Description **LABORATORY GROWN DIAMOND**
 Shape and Cutting Style **PEAR BRILLIANT**
 Measurements **7.57 X 5.04 X 3.16 MM**

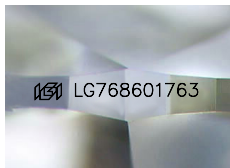
GRADING RESULTS

Carat Weight **0.68 CARAT**
 Color Grade **D**
 Clarity Grade **VS 2**

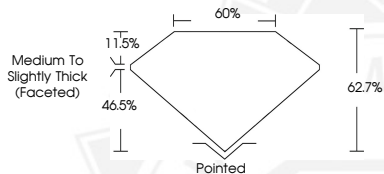
ADDITIONAL GRADING INFORMATION

Polish **EXCELLENT**
 Symmetry **GOOD**
 Fluorescence **NONE**
 Inscription(s) **IGI LG768601763**

Comments: This Laboratory Grown Diamond was created by Chemical Vapor Deposition (CVD) growth process. Type IIa



Sample Image Used



January 27, 2026
 IGI Report Number **LG768601763**
PEAR BRILLIANT
LABORATORY GROWN DIAMOND
7.57 X 5.04 X 3.16 MM
 Carat Weight **0.68 CARAT**
 Color Grade **D**
 Clarity Grade **VS 2**
 Polish **EXCELLENT**
 Symmetry **GOOD**
 Fluorescence **NONE**
 Inscription(s) **IGI LG768601763**

Comments: This Laboratory Grown Diamond was created by Chemical Vapor Deposition (CVD) growth process. Type IIa



January 27, 2026
 IGI Report Number **LG768601763**
PEAR BRILLIANT
LABORATORY GROWN DIAMOND
7.57 X 5.04 X 3.16 MM
 Carat Weight **0.68 CARAT**
 Color Grade **D**
 Clarity Grade **VS 2**
 Polish **EXCELLENT**
 Symmetry **GOOD**
 Fluorescence **NONE**
 Inscription(s) **IGI LG768601763**

Comments: This Laboratory Grown Diamond was created by Chemical Vapor Deposition (CVD) growth process. Type IIa

THIS DOCUMENT WAS PRODUCED WITH THE FOLLOWING SECURITY MEASURES: SPECIAL DOCUMENT PAPER, INK SCREENS, WATERMARK, BACKGROUND DESIGNS, HOLOGRAM AND OTHER SECURITY FEATURES NOT LISTED AND DO EXCEED DOCUMENT SECURITY INDUSTRY GUIDELINES.