



ELECTRONIC COPY

LG767611157
Report verification at igi.org



January 22, 2026

IGI Report Number LG767611157

Description LABORATORY GROWN DIAMOND

Shape and Cutting Style ROUND BRILLIANT

Measurements 8.10 - 8.14 X 5.09 MM

GRADING RESULTS

Carat Weight 2.05 CARATS

Color Grade G

Clarity Grade VVS 2

Cut Grade EXCELLENT

January 22, 2026

IGI Report Number LG767611157

Description LABORATORY GROWN DIAMOND

Shape and Cutting Style ROUND BRILLIANT

Measurements 8.10 - 8.14 X 5.09 MM

GRADING RESULTS

Carat Weight 2.05 CARATS

Color Grade G

Clarity Grade VVS 2

Cut Grade EXCELLENT

ADDITIONAL GRADING INFORMATION

Polish EXCELLENT

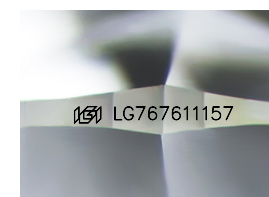
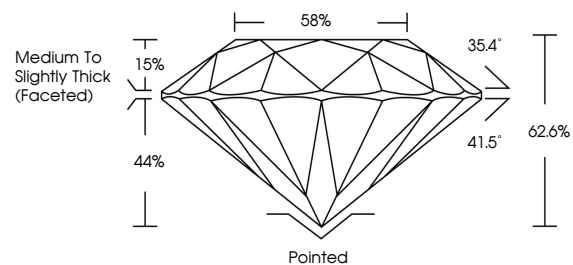
Symmetry EXCELLENT

Fluorescence NONE

Inscription(s) IGI LG767611157

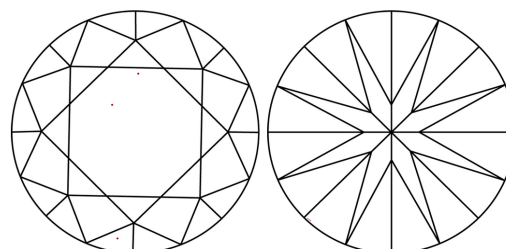
Comments: This Laboratory Grown Diamond was created by Chemical Vapor Deposition (CVD) growth process. Type IIa

PROPORTIONS



Sample Image Used

CLARITY CHARACTERISTICS



KEY TO SYMBOLS

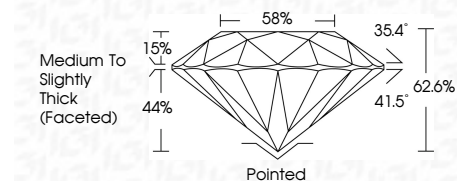
Red symbols indicate internal characteristics. Green symbols indicate external characteristics.

COLOR

D E F G H I J Faint Very Light Light

CLARITY

Table with columns: FL, IF, VVS 1-2, VS 1-2, SI 1-2, I 1-3 and corresponding descriptions: Flawless, Internally Flawless, Very Very Slightly Included, Very Slightly Included, Slightly Included, Included



ADDITIONAL GRADING INFORMATION

Polish EXCELLENT

Symmetry EXCELLENT

Fluorescence NONE

Inscription(s) IGI LG767611157

Comments: This Laboratory Grown Diamond was created by Chemical Vapor Deposition (CVD) growth process. Type IIa



Summary of report details including date, report number, description, measurements, grading results (Carat Weight, Color Grade, Clarity Grade, Cut Grade), and additional grading information (Polish, Symmetry, Fluorescence, Inscription(s)).