



January 20, 2026

IGI Report Number **LG767604001**

**ROUND BRILLIANT**

**LABORATORY GROWN DIAMOND**

**5.23 - 5.27 X 3.22 MM**

Carat Weight **0.53 CARAT**

Color Grade **D**

Clarity Grade **VVS 2**

Cut Grade **EXCELLENT**

Polish **EXCELLENT**

Symmetry **EXCELLENT**

Fluorescence **NONE**

Inscription(s) **IGI LG767604001**

Comments: This Laboratory Grown Diamond was created by Chemical Vapor Deposition (CVD) growth process. Type IIa

**LABORATORY GROWN DIAMOND REPORT**

January 20, 2026

IGI Report Number

**LG767604001**

Description

**LABORATORY GROWN DIAMOND**

Shape and Cutting Style

**ROUND BRILLIANT**

Measurements

**5.23 - 5.27 X 3.22 MM**

**GRADING RESULTS**

Carat Weight

**0.53 CARAT**

Color Grade

**D**

Clarity Grade

**VVS 2**

Cut Grade

**EXCELLENT**

**ADDITIONAL GRADING INFORMATION**

Polish

**EXCELLENT**

Symmetry

**EXCELLENT**

Fluorescence

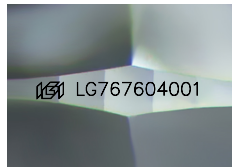
**NONE**

Inscription(s)

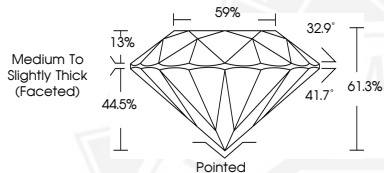
**IGI LG767604001**

Comments: This Laboratory Grown Diamond was created by Chemical Vapor Deposition (CVD) growth process.

Type IIa



Sample Image Used



January 20, 2026

IGI Report Number **LG767604001**

**ROUND BRILLIANT**

**LABORATORY GROWN DIAMOND**

**5.23 - 5.27 X 3.22 MM**

Carat Weight **0.53 CARAT**

Color Grade **D**

Clarity Grade **VVS 2**

Cut Grade **EXCELLENT**

Polish **EXCELLENT**

Symmetry **EXCELLENT**

Fluorescence **NONE**

Inscription(s) **IGI LG767604001**

Comments: This Laboratory Grown Diamond was created by Chemical Vapor Deposition (CVD) growth process. Type IIa



THIS DOCUMENT WAS PRODUCED WITH THE FOLLOWING SECURITY MEASURES: SPECIAL DOCUMENT PAPER, INK SCREENS, WATERMARK, BACKGROUND DESIGNS, HOLOGRAM AND OTHER SECURITY FEATURES NOT LISTED AND DO EXCEED DOCUMENT SECURITY INDUSTRY GUIDELINES.