



ELECTRONIC COPY

LG767603908
Report verification at igi.org



January 22, 2026

IGI Report Number **LG767603908**

Description **LABORATORY GROWN DIAMOND**

Shape and Cutting Style **ROUND BRILLIANT**

Measurements **8.11 - 8.17 X 5.12 MM**

GRADING RESULTS

Carat Weight **2.08 CARATS**

Color Grade **E**

Clarity Grade **VS 2**

Cut Grade **EXCELLENT**

January 22, 2026
IGI Report Number **LG767603908**
Description **LABORATORY GROWN DIAMOND**
Shape and Cutting Style **ROUND BRILLIANT**
Measurements **8.11 - 8.17 X 5.12 MM**

GRADING RESULTS

Carat Weight **2.08 CARATS**

Color Grade **E**

Clarity Grade **VS 2**

Cut Grade **EXCELLENT**

ADDITIONAL GRADING INFORMATION

Polish **EXCELLENT**

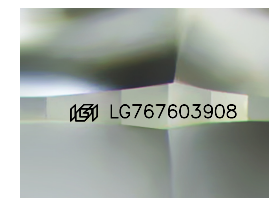
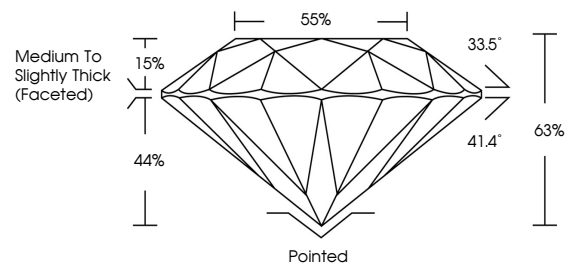
Symmetry **EXCELLENT**

Fluorescence **NONE**

Inscription(s) **LG767603908**

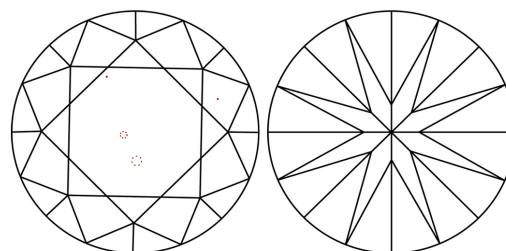
Comments: This Laboratory Grown Diamond was created by Chemical Vapor Deposition (CVD) growth process. Type IIa

PROPORTIONS



Sample Image Used

CLARITY CHARACTERISTICS



KEY TO SYMBOLS

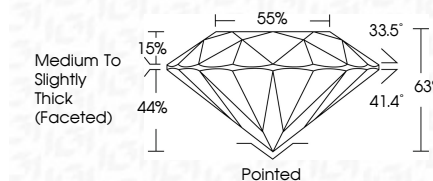
Red symbols indicate internal characteristics.
Green symbols indicate external characteristics.

COLOR

D E F G H I J Faint Very Light Light

CLARITY

FL	IF	VS ¹⁻²	VS ¹⁻²	SI ¹⁻²	I ¹⁻³
Flawless	Internally Flawless	Very Very Slightly Included	Very Slightly Included	Slightly Included	Included



ADDITIONAL GRADING INFORMATION

Polish **EXCELLENT**

Symmetry **EXCELLENT**

Fluorescence **NONE**

Inscription(s) **LG767603908**

Comments: This Laboratory Grown Diamond was created by Chemical Vapor Deposition (CVD) growth process. Type IIa



January 22, 2026
IGI Report No **LG767603908**
ROUND BRILLIANT
8.11 - 8.17 X 5.12 MM
2.08 CARATS
E
Color Grade
VS 2
EXCELLENT
Depth 63%
85%
Medium To Slightly Thick (Faceted)
Culet Pointed
Polish EXCELLENT
Symmetry EXCELLENT
Fluorescence NONE
Inscription(s) LG767603908
Comments: This Laboratory Grown Diamond was created by Chemical Vapor Deposition (CVD) growth process. Type IIa