



ELECTRONIC COPY

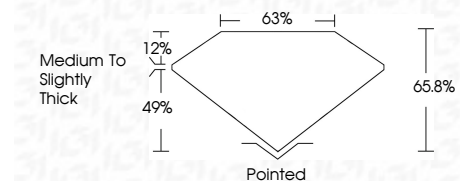
LG767602380
Report verification at igi.org



January 17, 2026
IGI Report Number **LG767602380**
Description **LABORATORY GROWN DIAMOND**
Shape and Cutting Style **CUT CORNERED
RECTANGULAR MODIFIED
BRILLIANT**
Measurements **7.25 X 5.09 X 3.35 MM**

GRADING RESULTS

Carat Weight **1.06 CARAT**
Color Grade **E**
Clarity Grade **VVS 2**



ADDITIONAL GRADING INFORMATION

Polish **EXCELLENT**
Symmetry **EXCELLENT**
Fluorescence **NONE**
Inscription(s) **(IGI) LG767602380**
Comments: This Laboratory Grown Diamond was created by Chemical Vapor Deposition (CVD) growth process. Type IIa



January 17, 2026
IGI Report No LG767602380
CUT CORNERED RECT. MODIFIED BRILLIANT
1.06 CARAT E
7.25 X 5.09 X 3.35 MM
Carat Weight
Color Grade
Clarity Grade
Depth
Table
Girdle
Medium to Slightly Thick
Culet
Pointed
Polish
EXCELLENT
Symmetry
EXCELLENT
Fluorescence
NONE
Inscription(s)
(IGI) LG767602380
Comments: This Laboratory Grown Diamond was created by Chemical Vapor Deposition (CVD) growth process. Type IIa

LABORATORY GROWN DIAMOND REPORT

January 17, 2026
IGI Report Number **LG767602380**
Description **LABORATORY GROWN DIAMOND**
Shape and Cutting Style **CUT CORNERED RECTANGULAR
MODIFIED BRILLIANT**
Measurements **7.25 X 5.09 X 3.35 MM**

GRADING RESULTS

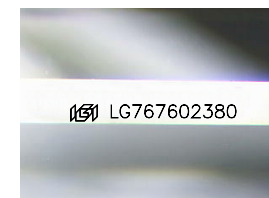
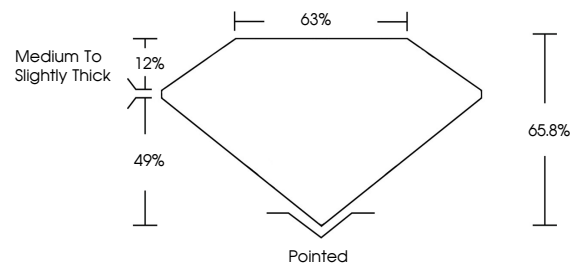
Carat Weight **1.06 CARAT**
Color Grade **E**
Clarity Grade **VVS 2**

ADDITIONAL GRADING INFORMATION

Polish **EXCELLENT**
Symmetry **EXCELLENT**
Fluorescence **NONE**
Inscription(s) **(IGI) LG767602380**

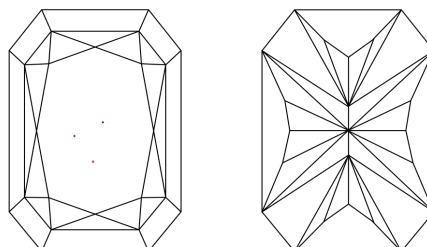
Comments: This Laboratory Grown Diamond was created by Chemical Vapor Deposition (CVD) growth process. Type IIa

PROPORTIONS



Sample Image Used

CLARITY CHARACTERISTICS



KEY TO SYMBOLS

Red symbols indicate internal characteristics.
Green symbols indicate external characteristics.

COLOR

D E F G H I J Faint Very Light Light

CLARITY

FL	IF	VVS ¹⁻²	VS ¹⁻²	SI ¹⁻²	I ¹⁻³
Flawless	Internally Flawless	Very Very Slightly Included	Very Slightly Included	Slightly Included	Included

