

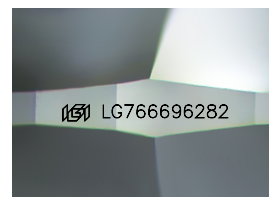
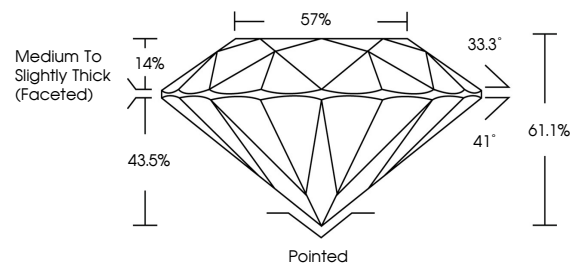


ELECTRONIC COPY

LABORATORY GROWN DIAMOND REPORT

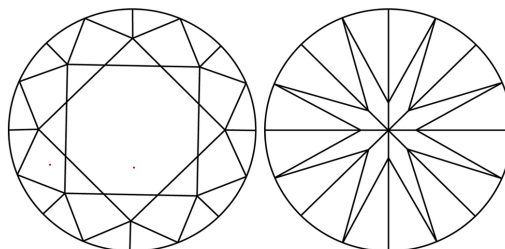
LG766696282
Report verification at lgi.org

PROPORTIONS



Sample Image Used

CLARITY CHARACTERISTICS



KEY TO SYMBOLS

Red symbols indicate internal characteristics.
Green symbols indicate external characteristics.

COLOR

D E F G H I J Faint Very Light Light

CLARITY

FL	IF	VVS ¹⁻²	VS ¹⁻²	SI ¹⁻²	I ¹⁻³
Flawless	Internally Flawless	Very Very Slightly Included	Very Slightly Included	Slightly Included	Included

LABORATORY GROWN DIAMOND REPORT



January 19, 2026

IGI Report Number LG766696282

Description	LABORATORY GROWN DIAMOND
-------------	--------------------------

Shape and Cutting Style **ROUND BRILLIANT**

Measurements **9.31 - 9.35 X 5.70 MM**

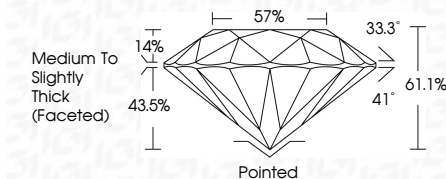
GRADING RESULTS

Carat Weight **3.03 CARATS**

Color Grade E

Clarity Grade **VVS 2**

Cut Grade **IDEAL**



ADDITIONAL GRADING INFORMATION

Polish **EXCELLENT**Symmetry **EXCELLENT**Fluorescence **NONE**Inscription(s) LG766696282

Comments: This Laboratory Grown Diamond was created by Chemical Vapor Deposition (CVD) growth process.
Type IIa



© IGI 2020, International Gemological Institute

FD - 10 20



THIS DOCUMENT WAS PRODUCED WITH THE FOLLOWING SECURITY MEASURES: SPECIAL DOCUMENT PAPER, INK SCREENS, WATERMARK, BACKGROUND DESIGNS, HOLOGRAM AND OTHER SECURITY FEATURES NOT LISTED AND DO EXCEED DOCUMENT SECURITY INDUSTRY GUIDELINES

January 19, 2026
IGI Report No LG76696282
ROUND BRILLIANT

Carat Weight	3.03 CARATS
Color Grade	E
Clarity Grade	VVS 2
Cut Grade	IDP AL
Depth	61.1%
Table	57%
Girdle	Medium to Slightly Thick (Faceted)
Culet	Pointed
Polish	EXCELLENT
Symmetry	EXCELLENT
Fluorescence	NONE

Comments:
This Laboratory Grown Diamond was created by Chemical Vapor Deposition (CVD) growth process.

www.igi.org

