



ELECTRONIC COPY

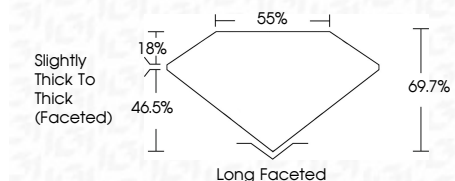
LG766694005
Report verification at igi.org



January 22, 2026
IGI Report Number **LG766694005**
Description **LABORATORY GROWN DIAMOND**
Shape and Cutting Style **CUSHION BRILLIANT**
Measurements **9.75 X 6.76 X 4.71 MM**

GRADING RESULTS

Carat Weight **2.41 CARATS**
Color Grade **G**
Clarity Grade **VVS 2**



ADDITIONAL GRADING INFORMATION

Polish **EXCELLENT**
Symmetry **EXCELLENT**
Fluorescence **NONE**
Inscription(s) **IGI LG766694005**
Comments: This Laboratory Grown Diamond was created by Chemical Vapor Deposition (CVD) growth process. Type IIa



January 22, 2026
IGI Report No **LG766694005**
CUSHION BRILLIANT
Carat Weight **2.41 CARATS**
Color Grade **G**
Clarity Grade **VVS 2**
Depth **46.7%**
Table **55%**
Girdle **Slightly Thick To Thick (Faceted)**
Culet **Long Faceted**
Polish **EXCELLENT**
Symmetry **EXCELLENT**
Fluorescence **NONE**
Inscription(s) **IGI LG766694005**
Comments: This Laboratory Grown Diamond was created by Chemical Vapor Deposition (CVD) growth process. Type IIa

LABORATORY GROWN DIAMOND REPORT

January 22, 2026
IGI Report Number **LG766694005**
Description **LABORATORY GROWN DIAMOND**
Shape and Cutting Style **CUSHION BRILLIANT**
Measurements **9.75 X 6.76 X 4.71 MM**

GRADING RESULTS

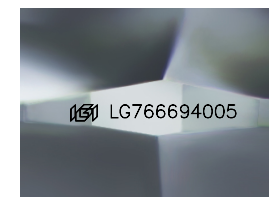
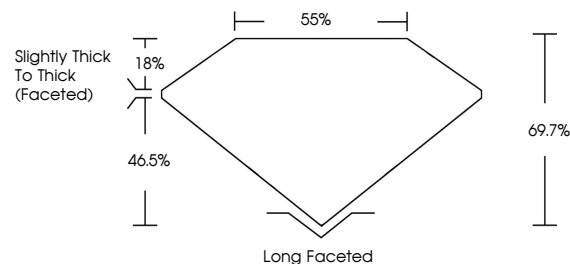
Carat Weight **2.41 CARATS**
Color Grade **G**
Clarity Grade **VVS 2**

ADDITIONAL GRADING INFORMATION

Polish **EXCELLENT**
Symmetry **EXCELLENT**
Fluorescence **NONE**
Inscription(s) **IGI LG766694005**

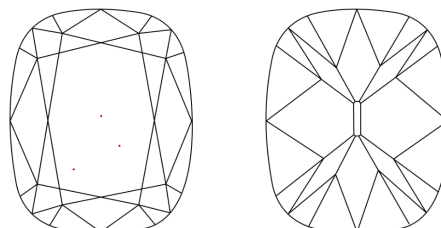
Comments: This Laboratory Grown Diamond was created by Chemical Vapor Deposition (CVD) growth process. Type IIa

PROPORTIONS



Sample Image Used

CLARITY CHARACTERISTICS



KEY TO SYMBOLS

Red symbols indicate internal characteristics.
Green symbols indicate external characteristics.

COLOR

D E F G H I J Faint Very Light Light

CLARITY

FL	IF	VVS ¹⁻²	VS ¹⁻²	SI ¹⁻²	I ¹⁻³
Flawless	Internally Flawless	Very Very Slightly Included	Very Slightly Included	Slightly Included	Included

