

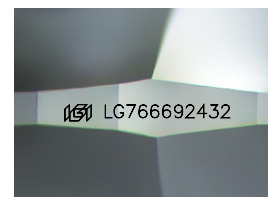
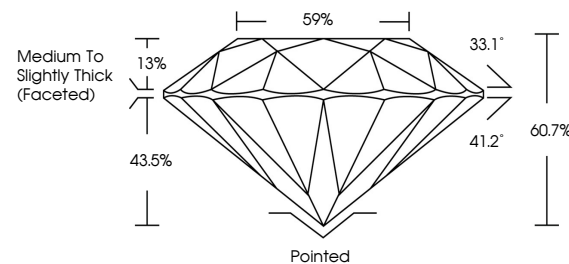


**ELECTRONIC COPY**

## LABORATORY GROWN DIAMOND REPORT

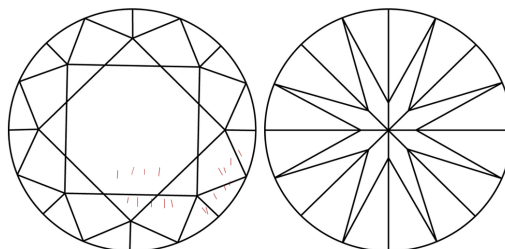
LG766692432  
Report verification at [igi.org](https://igi.org)

## PROPORTIONS



Sample Image Used

## CLARITY CHARACTERISTICS



## KEY TO SYMBOLS

Red symbols indicate internal characteristics.  
Green symbols indicate external characteristics.

## COLOR

D E F G H I J Faint Very Light Light

## CLARITY

| FL       | IF                  | VVS <sup>1-2</sup>          | VS <sup>1-2</sup>      | SI <sup>1-2</sup> | I <sup>1-3</sup> |
|----------|---------------------|-----------------------------|------------------------|-------------------|------------------|
| Flawless | Internally Flawless | Very Very Slightly Included | Very Slightly Included | Slightly Included | Included         |

## LABORATORY GROWN DIAMOND REPORT



January 20, 2026

IGI Report Number **LG766692432**Description **LABORATORY GROWN DIAMOND**Shape and Cutting Style **ROUND BRILLIANT**

Measurements **6.47 - 6.51 X 3.94 MM**

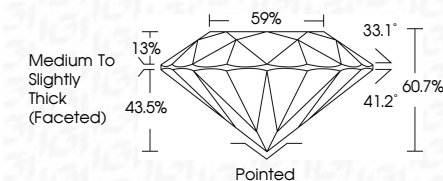
## GRADING RESULTS

Carat Weight 1.01 CARAT

Color Grade D

Clarity Grade VS 1

Cut Grade **IDEAL**



### ADDITIONAL GRADING INFORMATION

Polish **EXCELLENT**Symmetry **EXCELLENT**Fluorescence **NONE**Inscription(s)  LG766692432

Comments: As Grown - No indication of post-growth treatment.

This Laboratory Grown Diamond was created by High Pressure High Temperature (HPHT) growth process.

Type II



© IGI 2020, International Gemological Institute

FD - 10 20



THIS DOCUMENT WAS PRODUCED WITH THE FOLLOWING SECURITY MEASURES: SPECIAL DOCUMENT PAPER, INK SCREENS, WATERMARK, BACKGROUND DESIGNS, HOLOGRAM, AND OTHER SECURITY FEATURES NOT LISTED AND DO EXCEED DOCUMENT SECURITY INDUSTRY GUIDELINES.

**www.igi.org**

|                  |                           |                 |                       |   |   |                                     |  |                                 |                 |   |
|------------------|---------------------------|-----------------|-----------------------|---|---|-------------------------------------|--|---------------------------------|-----------------|---|
| January 20, 2026 | IGI Report No. LG76692432 | ROUND BRILLIANT | 6.07 - 6.51 X 3.94 MM | Carat Weight<br>Color Grade<br>Clarity Grade<br>Cut Grade | 1.01 CARAT<br>D<br>VS1<br>IDEAL<br>60.7%<br>89% | Medium to Slightly<br>Thick Faceted | Polished<br>EXCELLENT<br>EXCELLENT<br>NONE | Fluorescence<br>Inscriptions(s) | 1691 LG76692432 | Comments:<br>As Grown - No indication of post-growth treatment.<br>This Laboratory Grown Diamond was created by High Pressure High Temperature (HPHT) growth process. |
|------------------|---------------------------|-----------------|-----------------------|---|---|-------------------------------------|--|---------------------------------|-----------------|---|