

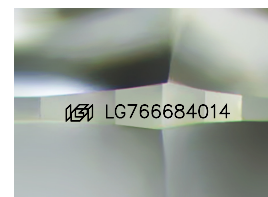
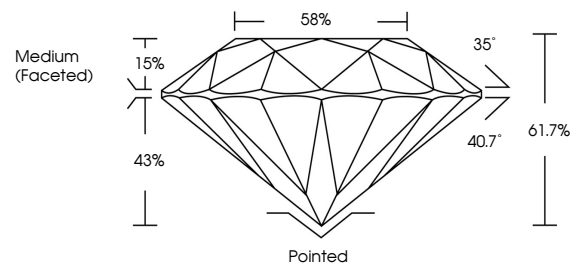


ELECTRONIC COPY

LABORATORY GROWN DIAMOND REPORT

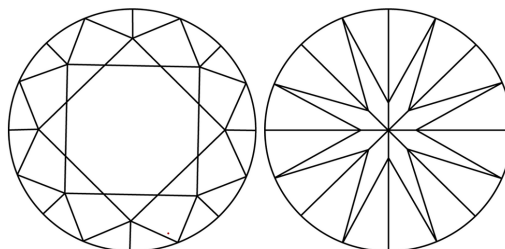
LG766684014
Report verification at igi.org

PROPORTIONS



Sample Image Used

CLARITY CHARACTERISTICS



KEY TO SYMBOLS

Red symbols indicate internal characteristics.
Green symbols indicate external characteristics.



www.igi.org

LABORATORY GROWN DIAMOND REPORT



January 16, 2026

IGI Report Number **LG766684014**Description **LABORATORY GROWN DIAMOND**Shape and Cutting Style **ROUND BRILLIANT**

Measurements	8.77 - 8.81 X 5.42 MM
--------------	-----------------------

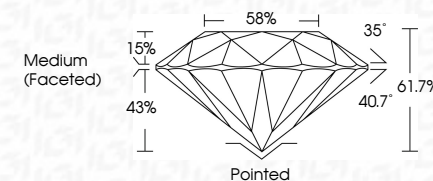
GRADING RESULTS

Carat Weight **2.59 CARATS**

Color Grade

Clarity Grade WS 2

Cut Grade **IDEAL**



ADDITIONAL GRADING INFORMATION

Polish **EXCELLENT**Symmetry **EXCELLENT**Fluorescence **NONE**Inscription(s) LG766684014

Comments: HEARTS & ARROWS

As Grown - No indication of post-growth treatment.

This Laboratory Grown Diamond was created by High Pressure High Temperature (HPHT) growth process.

Type II



January 16, 2026	2.59 CARATS	3.77 - 3.81 X 5.42 MM	Color Weight	WVS 2	Painted	Comments: HEARTS & ARROWS As Grown - No indication of post-growth treatment. This Laboratory Grown Diamond was grown in a High Pressure High Temperature (HPHT) growth process. Type II.
GI Report No. LG76684014	F	Carat Grade	Clarity Grade	IDEAL	EXCELLENT	
ROUND BRILLIANT			Cut Grade	61.7%	EXCELLENT	
			Depth	88%	NONE	
			Table			
			Girdle	Medium (Faceted)	§§§ LG76684014	

© IGI 2020, International Gemological Institute

FD - 10 20



THIS DOCUMENT WAS PRODUCED WITH THE FOLLOWING SECURITY MEASURES: SPECIAL DOCUMENT PAPER, INK SCREENS, WATERMARK, BACKGROUND DESIGNS, HOLOGRAM AND OTHER SECURITY FEATURES NOT LISTED AND DO EXCEED DOCUMENT SECURITY INDUSTRY GUIDELINES