



ELECTRONIC COPY

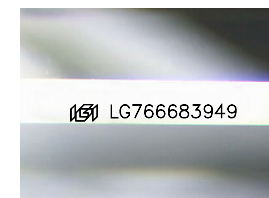
LG766683949
Report verification at igi.org



January 22, 2026
IGI Report Number **LG766683949**
Description **LABORATORY GROWN DIAMOND**
Shape and Cutting Style **TAPERED BAGUETTE**
Measurements **8.90 X 4.72 X 2.78 MM**

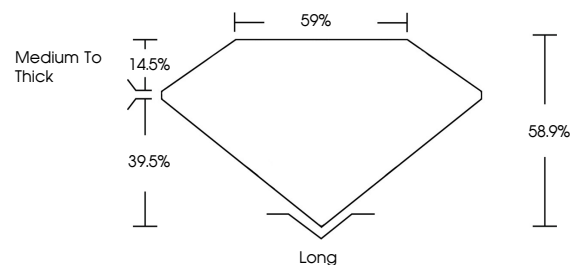
GRADING RESULTS

Carat Weight **1.01 CARAT**
Color Grade **D**
Clarity Grade **VVS 1**

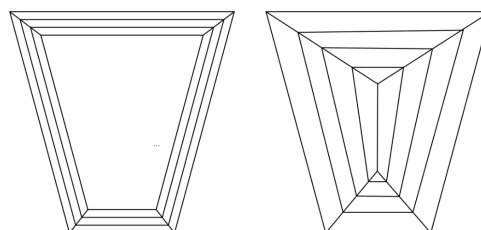


Sample Image Used

PROPORTIONS



CLARITY CHARACTERISTICS



KEY TO SYMBOLS

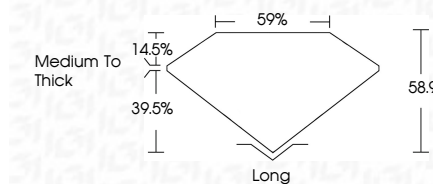
Red symbols indicate internal characteristics.
Green symbols indicate external characteristics.

COLOR

D E F G H I J Faint Very Light Light

CLARITY

| FL | IF | VVS ¹⁻² | VS ¹⁻² | SI ¹⁻² | I ¹⁻³ |
|----------|---------------------|-----------------------------|------------------------|-------------------|------------------|
| Flawless | Internally Flawless | Very Very Slightly Included | Very Slightly Included | Slightly Included | Included |



ADDITIONAL GRADING INFORMATION

Polish **EXCELLENT**
Symmetry **EXCELLENT**
Fluorescence **NONE**
Inscription(s) **IGI LG766683949**
Comments: This Laboratory Grown Diamond was created by Chemical Vapor Deposition (CVD) growth process.
Type IIa



IGI



January 22, 2026
IGI Report No LG766683949
TAPERED BAGUETTE
8.90 X 4.72 X 2.78 MM
1.01 CARAT
D
VVS 1
EXCELLENT
EXCELLENT
NONE
IGI LG766683949
Culet
Polish
Symmetry
Fluorescence
Inscription(s)
Long
EXCELLENT
EXCELLENT
NONE
IGI LG766683949
Comments: This Laboratory Grown Diamond was created by Chemical Vapor Deposition (CVD) growth process.
Type IIa