



ELECTRONIC COPY

LG766683797
Report verification at igi.org



January 28, 2026

IGI Report Number **LG766683797**

Description **LABORATORY GROWN DIAMOND**

Shape and Cutting Style **SQUARE EMERALD CUT**

Measurements **8.13 X 8.01 X 4.87 MM**

GRADING RESULTS

Carat Weight **3.02 CARATS**

Color Grade **FANCY INTENSE PINK**

Clarity Grade **VS 1**

LABORATORY GROWN DIAMOND REPORT

January 28, 2026

IGI Report Number **LG766683797**

Description **LABORATORY GROWN DIAMOND**

Shape and Cutting Style **SQUARE EMERALD CUT**

Measurements **8.13 X 8.01 X 4.87 MM**

GRADING RESULTS

Carat Weight **3.02 CARATS**

Color Grade **FANCY INTENSE PINK**

Clarity Grade **VS 1**

ADDITIONAL GRADING INFORMATION

Polish **EXCELLENT**

Symmetry **EXCELLENT**

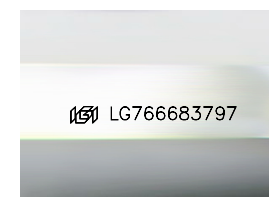
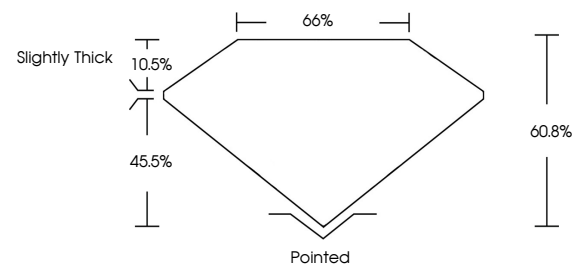
Fluorescence **SLIGHT**

Inscription(s) **LG766683797**

Comments: This Laboratory Grown Diamond was created by Chemical Vapor Deposition (CVD) growth process. Indications of post-growth treatment.

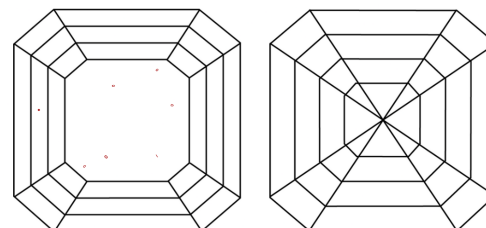
Secondary color: Brown

PROPORTIONS



Sample Image Used

CLARITY CHARACTERISTICS



KEY TO SYMBOLS

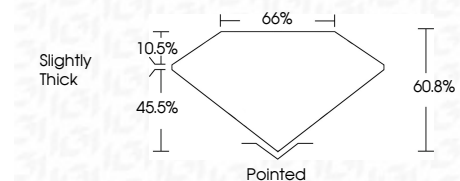
Red symbols indicate internal characteristics.
Green symbols indicate external characteristics.

COLOR

D E F G H I J Faint Very Light Light

CLARITY

FL	IF	VS ¹⁻²	VS ¹⁻²	SI ¹⁻²	I ¹⁻³
Flawless	Internally Flawless	Very Very Slightly Included	Very Slightly Included	Slightly Included	Included



ADDITIONAL GRADING INFORMATION

Polish **EXCELLENT**

Symmetry **EXCELLENT**

Fluorescence **SLIGHT**

Inscription(s) **LG766683797**

Comments: This Laboratory Grown Diamond was created by Chemical Vapor Deposition (CVD) growth process. Indications of post-growth treatment.

Secondary color: Brown



IGI



January 28, 2026
IGI Report No LG766683797
SQUARE EMERALD CUT
8.13 X 8.01 X 4.87 MM
3.02 CARATS
FANCY INTENSE PINK
VS 1
60.8%
45.5%
Slightly Thick
Pointed
EXCELLENT
EXCELLENT
SLIGHT
IGI LG766683797

Comments: This Laboratory Grown Diamond was created by Chemical Vapor Deposition (CVD) growth process. Indications of post-growth treatment. Secondary color: Brown