



January 17, 2026

IGI Report Number **LG766681327**

**EMERALD CUT  
LABORATORY GROWN DIAMOND**

**6.66 X 4.68 X 3.19 MM**

Carat Weight	<b>0.98 CARAT</b>
Color Grade	<b>D</b>
Clarity Grade	<b>I.F.</b>
Polish	<b>EXCELLENT</b>
Symmetry	<b>EXCELLENT</b>
Fluorescence	<b>NONE</b>
Inscription(s)	<b>IGI LG766681327</b>

Comments: This Laboratory Grown Diamond was created by Chemical Vapor Deposition (CVD) growth process. Type IIa

**LABORATORY GROWN DIAMOND REPORT**

January 17, 2026

IGI Report Number

**LG766681327**

Description

**LABORATORY GROWN DIAMOND**

Shape and Cutting Style

**EMERALD CUT**

Measurements

**6.66 X 4.68 X 3.19 MM**

**GRADING RESULTS**

Carat Weight

**0.98 CARAT**

Color Grade

**D**

Clarity Grade

**INTERNALLY FLAWLESS**

**ADDITIONAL GRADING INFORMATION**

Polish

**EXCELLENT**

Symmetry

**EXCELLENT**

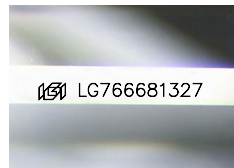
Fluorescence

**NONE**

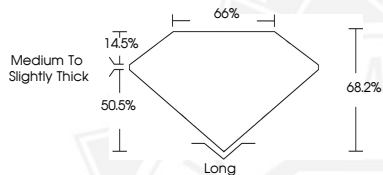
Inscription(s)

**IGI LG766681327**

Comments: This Laboratory Grown Diamond was created by Chemical Vapor Deposition (CVD) growth process. Type IIa



Sample Image Used



January 17, 2026

IGI Report Number **LG766681327**

**EMERALD CUT  
LABORATORY GROWN DIAMOND**

**6.66 X 4.68 X 3.19 MM**

Carat Weight	<b>0.98 CARAT</b>
Color Grade	<b>D</b>
Clarity Grade	<b>I.F.</b>
Polish	<b>EXCELLENT</b>
Symmetry	<b>EXCELLENT</b>
Fluorescence	<b>NONE</b>
Inscription(s)	<b>IGI LG766681327</b>

Comments: This Laboratory Grown Diamond was created by Chemical Vapor Deposition (CVD) growth process. Type IIa



THIS DOCUMENT WAS PRODUCED WITH THE FOLLOWING SECURITY MEASURES: SPECIAL DOCUMENT PAPER, INK SCREENS, WATERMARK, BACKGROUND DESIGNS, HOLOGRAM AND OTHER SECURITY FEATURES NOT LISTED AND DO EXCEED DOCUMENT SECURITY INDUSTRY GUIDELINES.