



January 20, 2026

IGI Report Number **LG766681320**

**PEAR BRILLIANT**

**LABORATORY GROWN DIAMOND**

**6.10 X 3.70 X 2.23 MM**

Carat Weight **0.30 CARAT**

Color Grade **E**

Clarity Grade **VVS 2**

Polish **VERY GOOD**

Symmetry **VERY GOOD**

Fluorescence **NONE**

Inscription(s) **IGI LG766681320**

Comments: This Laboratory Grown Diamond was created by Chemical Vapor Deposition (CVD) growth process. Type IIa

**LABORATORY GROWN DIAMOND REPORT**

January 20, 2026

IGI Report Number

**LG766681320**

Description

**LABORATORY GROWN DIAMOND**

Shape and Cutting Style

**PEAR BRILLIANT**

Measurements

**6.10 X 3.70 X 2.23 MM**

**GRADING RESULTS**

Carat Weight

**0.30 CARAT**

Color Grade

**E**

Clarity Grade

**VVS 2**

**ADDITIONAL GRADING INFORMATION**

Polish

**VERY GOOD**

Symmetry

**VERY GOOD**

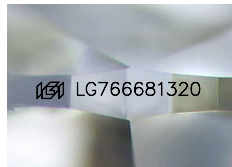
Fluorescence

**NONE**

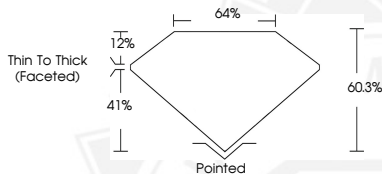
Inscription(s)

**IGI LG766681320**

Comments: This Laboratory Grown Diamond was created by Chemical Vapor Deposition (CVD) growth process. Type IIa



Sample Image Used



January 20, 2026

IGI Report Number **LG766681320**

**PEAR BRILLIANT**

**LABORATORY GROWN DIAMOND**

**6.10 X 3.70 X 2.23 MM**

Carat Weight **0.30 CARAT**

Color Grade **E**

Clarity Grade **VVS 2**

Polish **VERY GOOD**

Symmetry **VERY GOOD**

Fluorescence **NONE**

Inscription(s) **IGI LG766681320**

Comments: This Laboratory Grown Diamond was created by Chemical Vapor Deposition (CVD) growth process. Type IIa



THIS DOCUMENT WAS PRODUCED WITH THE FOLLOWING SECURITY MEASURES: SPECIAL DOCUMENT PAPER, INK SCREENS, WATERMARK BACKGROUND DESIGNS, HOLOGRAM AND OTHER SECURITY FEATURES NOT LISTED AND DO EXCEED DOCUMENT SECURITY INDUSTRY GUIDELINES.