



**ELECTRONIC COPY**

**LABORATORY GROWN DIAMOND REPORT**

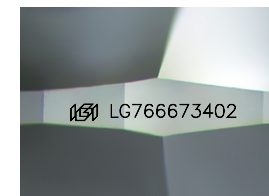
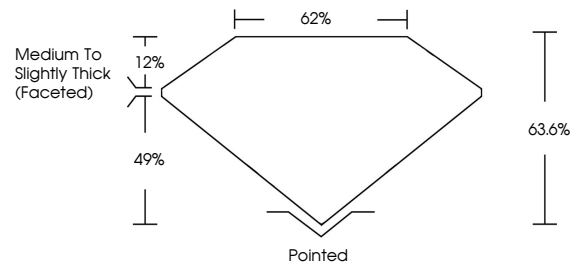
January 24, 2026  
IGI Report Number **LG766673402**  
Description **LABORATORY GROWN DIAMOND**  
Shape and Cutting Style **SQUARE CUSHION MODIFIED BRILLIANT**  
Measurements **8.51 X 8.45 X 5.37 MM**  
**GRADING RESULTS**  
Carat Weight **3.01 CARATS**  
Color Grade **FANCY INTENSE PINK**  
Clarity Grade **VVS 2**

**ADDITIONAL GRADING INFORMATION**

Polish **EXCELLENT**  
Symmetry **EXCELLENT**  
Fluorescence **SLIGHT**  
Inscription(s) **IGI LG766673402**

Comments: This Laboratory Grown Diamond was created by Chemical Vapor Deposition (CVD) growth process. Indications of post-growth treatment.

**PROPORTIONS**



Sample Image Used

**COLOR**

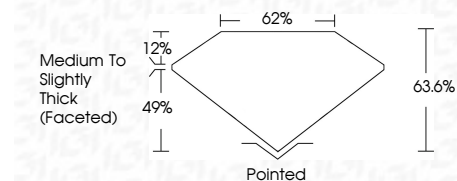
D E F G H I J Faint Very Light Light

**CLARITY**

FL	IF	VVS <sup>1-2</sup>	VS <sup>1-2</sup>	SI <sup>1-2</sup>	I <sup>1-3</sup>
Flawless	Internally Flawless	Very Very Slightly Included	Very Slightly Included	Slightly Included	Included



January 24, 2026  
IGI Report Number **LG766673402**  
Description **LABORATORY GROWN DIAMOND**  
Shape and Cutting Style **SQUARE CUSHION MODIFIED BRILLIANT**  
Measurements **8.51 X 8.45 X 5.37 MM**  
**GRADING RESULTS**  
Carat Weight **3.01 CARATS**  
Color Grade **FANCY INTENSE PINK**  
Clarity Grade **VVS 2**



**ADDITIONAL GRADING INFORMATION**

Polish **EXCELLENT**  
Symmetry **EXCELLENT**  
Fluorescence **SLIGHT**  
Inscription(s) **IGI LG766673402**  
Comments: This Laboratory Grown Diamond was created by Chemical Vapor Deposition (CVD) growth process. Indications of post-growth treatment.



January 24, 2026  
IGI Report No LG766673402  
**SQUARE CUSHION MODIFIED BRILLIANT**  
8.51 X 8.45 X 5.37 MM  
3.01 CARATS  
FANCY INTENSE PINK  
VVS 2  
63.6%  
62%  
Medium to Slightly Thick (Faceted)  
Pointed  
EXCELLENT  
EXCELLENT  
SLIGHT  
IGI LG766673402

Comments: This Laboratory Grown Diamond was created by Chemical Vapor Deposition (CVD) growth process. Indications of post-growth treatment.