



**ELECTRONIC COPY**

LG766671119  
Report verification at igi.org



January 19, 2026  
IGI Report Number **LG766671119**  
Description **LABORATORY GROWN DIAMOND**  
Shape and Cutting Style **SQUARE CUSHION MODIFIED  
BRILLIANT**

Measurements **10.18 X 10.11 X 6.59 MM**

**GRADING RESULTS**

Carat Weight **5.09 CARATS**  
Color Grade **E**  
Clarity Grade **VS 2**

January 19, 2026  
IGI Report Number **LG766671119**  
Description **LABORATORY GROWN DIAMOND**  
Shape and Cutting Style **SQUARE CUSHION MODIFIED  
BRILLIANT**  
Measurements **10.18 X 10.11 X 6.59 MM**

**GRADING RESULTS**

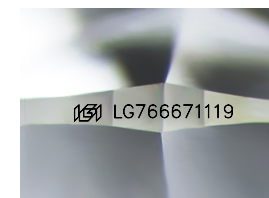
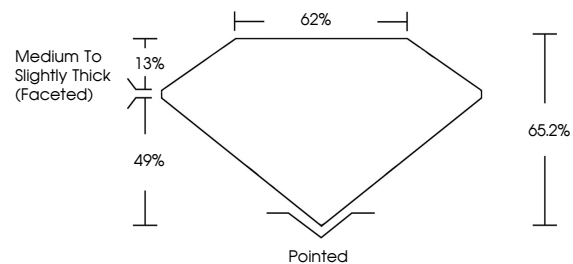
Carat Weight **5.09 CARATS**  
Color Grade **E**  
Clarity Grade **VS 2**

**ADDITIONAL GRADING INFORMATION**

Polish **EXCELLENT**  
Symmetry **EXCELLENT**  
Fluorescence **NONE**  
Inscription(s) **IGI LG766671119**

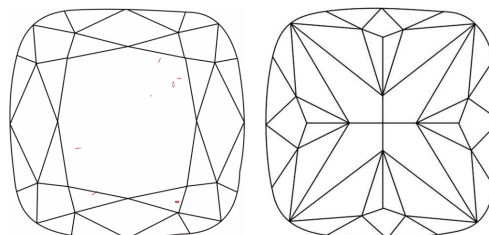
Comments: This Laboratory Grown Diamond was created by Chemical Vapor Deposition (CVD) growth process. Type IIa

**PROPORTIONS**



Sample Image Used

**CLARITY CHARACTERISTICS**



**KEY TO SYMBOLS**

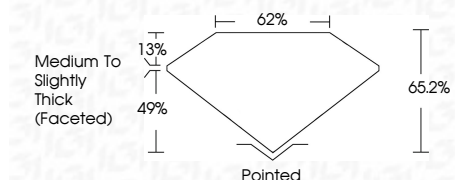
Red symbols indicate internal characteristics.  
Green symbols indicate external characteristics.

**COLOR**

D E F G H I J Faint Very Light Light

**CLARITY**

FL	IF	VS <sup>1-2</sup>	VS <sup>1-2</sup>	SI <sup>1-2</sup>	I <sup>1-3</sup>
Flawless	Internally Flawless	Very Very Slightly Included	Very Slightly Included	Slightly Included	Included



**ADDITIONAL GRADING INFORMATION**

Polish **EXCELLENT**  
Symmetry **EXCELLENT**  
Fluorescence **NONE**  
Inscription(s) **IGI LG766671119**  
Comments: This Laboratory Grown Diamond was created by Chemical Vapor Deposition (CVD) growth process. Type IIa



**IGI**



January 19, 2026  
IGI Report No **LG766671119**  
**SQUARE CUSHION MODIFIED BRILLIANT**  
**10.18 X 10.11 X 6.59 MM**  
Carat Weight **5.09 CARATS**  
Color Grade **E**  
Clarity Grade **VS 2**  
Table **62%**  
Depth **49%**  
Girdle **Medium to Slightly Thick (Faceted)**  
Culet **Pointed**  
Polish **EXCELLENT**  
Symmetry **EXCELLENT**  
Fluorescence **NONE**  
Inscription(s) **IGI LG766671119**  
Comments: This Laboratory Grown Diamond was created by Chemical Vapor Deposition (CVD) growth process. Type IIa