



January 20, 2026

IGI Report Number **LG766669865**

EMERALD CUT

LABORATORY GROWN DIAMOND

5.80 X 4.13 X 2.78 MM

Carat Weight **0.65 CARAT**

Color Grade **D**

Clarity Grade **VVS 1**

Polish **VERY GOOD**

Symmetry **EXCELLENT**

Fluorescence **NONE**

Inscription(s) **IGI LG766669865**

Comments: This Laboratory Grown Diamond was created by Chemical Vapor Deposition (CVD) growth process. Type IIa

LABORATORY GROWN DIAMOND REPORT

January 20, 2026

IGI Report Number

LG766669865

Description

LABORATORY GROWN DIAMOND

Shape and Cutting Style

EMERALD CUT

Measurements

5.80 X 4.13 X 2.78 MM

GRADING RESULTS

Carat Weight

0.65 CARAT

Color Grade

D

Clarity Grade

VVS 1

ADDITIONAL GRADING INFORMATION

Polish

VERY GOOD

Symmetry

EXCELLENT

Fluorescence

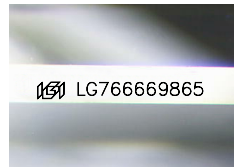
NONE

Inscription(s)

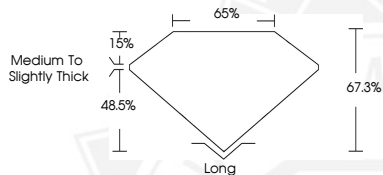
IGI LG766669865

Comments: This Laboratory Grown Diamond was created by Chemical Vapor Deposition (CVD) growth process.

Type IIa



Sample Image Used



January 20, 2026

IGI Report Number **LG766669865**

EMERALD CUT

LABORATORY GROWN DIAMOND

5.80 X 4.13 X 2.78 MM

Carat Weight **0.65 CARAT**

Color Grade **D**

Clarity Grade **VVS 1**

Polish **VERY GOOD**

Symmetry **EXCELLENT**

Fluorescence **NONE**

Inscription(s) **IGI LG766669865**

Comments: This Laboratory Grown Diamond was created by Chemical Vapor Deposition (CVD) growth process. Type IIa



THIS DOCUMENT WAS PRODUCED WITH THE FOLLOWING SECURITY MEASURES: SPECIAL DOCUMENT PAPER, INK SCREENS, WATERMARK, BACKGROUND DESIGNS, HOLOGRAM AND OTHER SECURITY FEATURES NOT LISTED AND DO EXCEED DOCUMENT SECURITY INDUSTRY GUIDELINES.