



ELECTRONIC COPY

LABORATORY GROWN DIAMOND REPORT

LG766664533
Report verification at igi.org

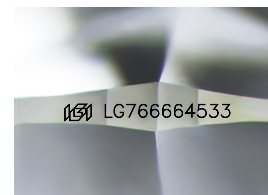
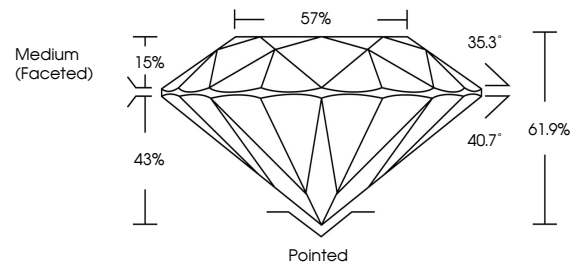
January 20, 2026	
IGI Report Number	LG766664533
Description	LABORATORY GROWN DIAMOND
Shape and Cutting Style	ROUND BRILLIANT
Measurements	8.12 - 8.17 X 5.05 MM
GRADING RESULTS	
Carat Weight	2.08 CARATS
Color Grade	D
Clarity Grade	VS 1
Cut Grade	IDEAL

ADDITIONAL GRADING INFORMATION

Polish	EXCELLENT
Symmetry	EXCELLENT
Fluorescence	NONE
Inscription(s)	15 LG766664533

Comments: This Laboratory Grown Diamond was created by Chemical Vapor Deposition (CVD) growth process.
Type IIa

PROPORTIONS



Sample Image Used

COLOR

D E F G H I J Faint Very Light Light

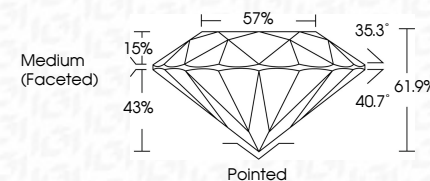
CLARITY

FL	IF	VVS ¹⁻²	VS ¹⁻²	SI ¹⁻²	I ¹⁻³
Flawless	Internally Flawless	Very Very Slightly Included	Very Slightly Included	Slightly Included	Included

LABORATORY GROWN DIAMOND REPORT



January 20, 2026	
IGI Report Number	LG766664533
Description	LABORATORY GROWN DIAMOND
Shape and Cutting Style	ROUND BRILLIANT
Measurements	8.12 - 8.17 X 5.05 MM
GRADING RESULTS	
Carat Weight	2.08 CARATS
Color Grade	D
Clarity Grade	VS 1
Cut Grade	IDEAL



ADDITIONAL GRADING INFORMATION

Polish	EXCELLENT
Symmetry	EXCELLENT
Fluorescence	NONE
Inscription(s)	 LG766664533
<p>Comments: This Laboratory Grown Diamond was created by Chemical Vapor Deposition (CVD) growth process.</p> <p>Type IIa</p>	



© IGI 2020, International Gemological Institute

FD - 10 20



THIS DOCUMENT WAS PRODUCED WITH THE FOLLOWING SECURITY MEASURES: SPECIAL DOCUMENT PAPER, INK SCREENS, WATERMARK, BACKGROUND DESIGNS, HOLOGRAM AND OTHER SECURITY FEATURES NOT LISTED AND DO EXCEED DOCUMENT SECURITY INDUSTRY GUIDELINES

www.igi.org

January 20, 2026
GI Report No LG76664533
ROUND BRILLIANT

8.12 - 8.17 X 5.05 MM

8.12 - 8.17 X 5.06 MM
2.08 CARATS

D

Color Grade

Clarity Grade	VS 1
VS 1	

Cut Grade	IDEAL
Depth	61.9%

Dep III	01.9%
Table	57%

Girdle

Culet	Pointed
-------	---------

Cut	Pointed
Polish	EXCELLENT

	EXCELLENT	NONE
Symmetry		
Fluorescence		

Fluorescence	None
Inscription(s)	151 LG766664533

Page 10 of 10

Comments:
This Laboratory Grown Diamond was
created by Chemical Vapor Deposition

created by Chemical Vapor Deposition (CVD) growth process.

Type IIa