

INTERNATIONAL
GEMOLOGICAL
INSTITUTE

ELECTRONIC COPY

LABORATORY GROWN DIAMOND REPORT

January 20, 2026

IGI Report Number

Description

Shape and Cutting Style

Measurements

LG766663941

LABORATORY GROWN DIAMOND

ROUND BRILLIANT

10.24 - 10.31 X 6.26 MM

GRADING RESULTS

Carat Weight

Color Grade

Clarity Grade

Cut Grade

4.04 CARATS

E

VVS 2

IDEAL

ADDITIONAL GRADING INFORMATION

Polish

Symmetry

Fluorescence

Inscription(s)

EXCELLENT

EXCELLENT

NONE

IGI LG766663941

Comments: This Laboratory Grown Diamond was created by Chemical Vapor Deposition (CVD) growth process. Type IIa

LABORATORY GROWN DIAMOND REPORT

January 20, 2026

IGI Report No LG766663941

ROUND BRILLIANT

10.24 - 10.31 X 6.26 MM

4.04 CARATS

E

VVS 2

IDEAL

60.9%

88%

Medium (Faceted)

Pointed

EXCELLENT

EXCELLENT

NONE

IGI LG766663941

Comments: The Laboratory Grown Diamond was created by Chemical Vapor Deposition (CVD) growth process. Type IIa

LABORATORY GROWN DIAMOND REPORT

January 20, 2026

IGI Report No LG766663941

ROUND BRILLIANT

10.24 - 10.31 X 6.26 MM

4.04 CARATS

E

VVS 2

IDEAL

60.9%

88%

Medium (Faceted)

Pointed

EXCELLENT

EXCELLENT

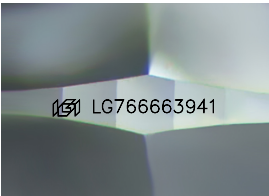
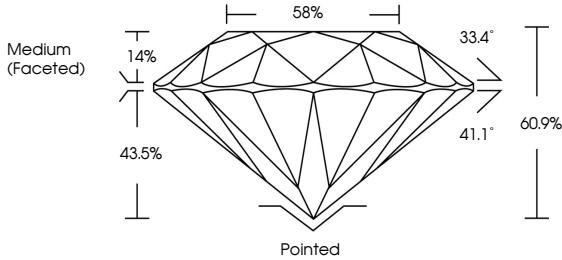
NONE

IGI LG766663941

Comments: The Laboratory Grown Diamond was created by Chemical Vapor Deposition (CVD) growth process. Type IIa

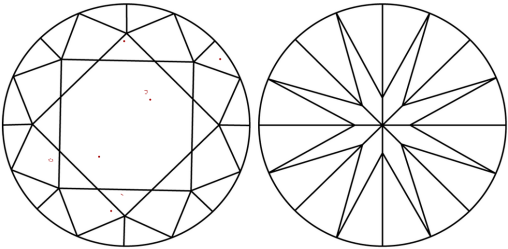
LG766663941
Report verification at igi.org

PROPORTIONS



Sample Image Used

CLARITY CHARACTERISTICS



KEY TO SYMBOLS

Red symbols indicate internal characteristics.
Green symbols indicate external characteristics.

COLOR

D E F G H I J Faint Very Light Light

CLARITY

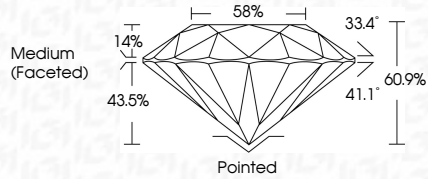
FL	IF	VVS ¹⁻²	VS ¹⁻²	SI ¹⁻²	I ¹⁻³
Flawless	Internally Flawless	Very Very Slightly Included	Very Slightly Included	Slightly Included	Included

LABORATORY GROWN DIAMOND REPORT



January 20, 2026
IGI Report Number
Description
Shape and Cutting Style
Measurements
GRADING RESULTS
Carat Weight
Color Grade
Clarity Grade
Cut Grade

LG766663941
LABORATORY GROWN DIAMOND
ROUND BRILLIANT
10.24 - 10.31 X 6.26 MM
4.04 CARATS
E
VVS 2
IDEAL



ADDITIONAL GRADING INFORMATION

Polish
Symmetry
Fluorescence
Inscription(s)

EXCELLENT
EXCELLENT
NONE
IGI LG766663941

Comments: This Laboratory Grown Diamond was created by Chemical Vapor Deposition (CVD) growth process. Type IIa



IGI



January 20, 2026	IGI Report No LG766663941	ROUND BRILLIANT	10.24 - 10.31 X 6.26 MM	4.04 CARATS	E	VVS 2	IDEAL	60.9%	88%	Medium (Faceted)	Pointed	EXCELLENT	EXCELLENT	NONE	IGI LG766663941	Comments: The Laboratory Grown Diamond was created by Chemical Vapor Deposition (CVD) growth process. Type IIa
				Carat Weight	Color Grade	Clarity Grade	Cut Grade	Depth	Table	Girdle	Culet	Polish	Symmetry	Fluorescence	Inscription(s)	