



ELECTRONIC COPY

LABORATORY GROWN DIAMOND REPORT

| | |
|-------------------------|--------------------------|
| January 19, 2026 | |
| IGI Report Number | LG766662843 |
| Description | LABORATORY GROWN DIAMOND |
| Shape and Cutting Style | ROUND BRILLIANT |
| Measurements | 6.35 - 6.41 X 4.00 MM |

GRADING RESULTS

| | |
|---------------|------------|
| Carat Weight | 1.00 CARAT |
| Color Grade | D |
| Clarity Grade | VVS 2 |
| Cut Grade | EXCELLENT |

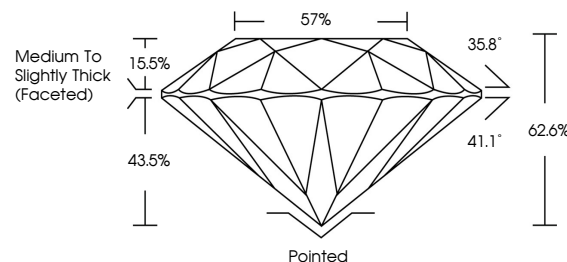
ADDITIONAL GRADING INFORMATION

| | |
|----------------|----------------|
| Polish | EXCELLENT |
| Symmetry | EXCELLENT |
| Fluorescence | NONE |
| Inscription(s) | 15 LG766662843 |

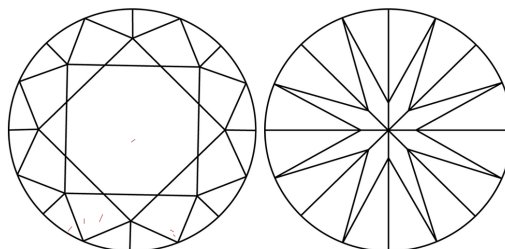
Comments: As Grown - No indication of post-growth treatment.
This Laboratory Grown Diamond was created by High Pressure High Temperature (HPHT) growth process.
Type II

LG766662843
Report verification at lgi.org

PROPORTIONS

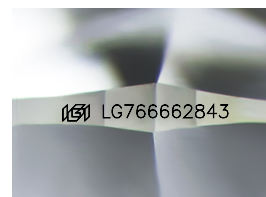


CLARITY CHARACTERISTICS



KEY TO SYMBOLS

Red symbols indicate internal characteristics.
Green symbols indicate external characteristics.



Sample Image Used

COLOR

D E F G H I J Faint Very Light Light

CLARITY

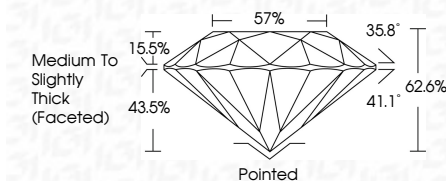
| FL | IF | VVS ¹⁻² | VS ¹⁻² | SI ¹⁻² | I ¹⁻³ |
|----------|---------------------|-----------------------------|------------------------|-------------------|------------------|
| Flawless | Internally Flawless | Very Very Slightly Included | Very Slightly Included | Slightly Included | Included |



| | |
|-------------------------|--------------------------|
| January 19, 2026 | |
| IGI Report Number | LG766662843 |
| Description | LABORATORY GROWN DIAMOND |
| Shape and Cutting Style | ROUND BRILLIANT |
| Measurements | 6.35 - 6.41 X 4.00 MM |

GRADING RESULTS

| | |
|---------------|------------|
| Carat Weight | 1.00 CARAT |
| Color Grade | D |
| Clarity Grade | VVS 2 |
| Cut Grade | EXCELLENT |



ADDITIONAL GRADING INFORMATION

| | |
|--|---|
| Polish | EXCELLENT |
| Symmetry | EXCELLENT |
| Fluorescence | NONE |
| Inscription(s) |  LG766662843 |
| Comments: As Grown - No indication of post-growth treatment. | |
| This Laboratory Grown Diamond was created by High Pressure High Temperature (HPHT) growth process. | |
| Type II | |



© IGI 2020, International Gemological Institute

FD - 10 20



THIS DOCUMENT WAS PRODUCED WITH THE FOLLOWING SECURITY MEASURES: SPECIAL DOCUMENT PAPER, INK SCREENS, WATERMARK, BACKGROUND DESIGNS, HOLOGRAM AND OTHER SECURITY FEATURES NOT LISTED AND DO EXCEED DOCUMENT SECURITY INDUSTRY GUIDELINE

www.igi.org

| | |
|---------------------------|--------------------|
| January 19, 2026 | 1.00 CARAT |
| GL Report No. LG746662843 | D |
| ROUND BRILLIANT | WVS 2 |
| | EXCELLENT |
| | 62.5% |
| | 57% |
| | Medium to Slightly |
| | Cut (faceted) |
| | Polished |
| | EXCELLENT |
| | EXCELLENT |
| | NONE |
| | lg9 LG746662843 |

Comments:

to Growth - No indication of post-growth
 The Laboratory Grown Diamond was
 created by High Pressure High
 temperature (HPHT) growth process.
 Type II