



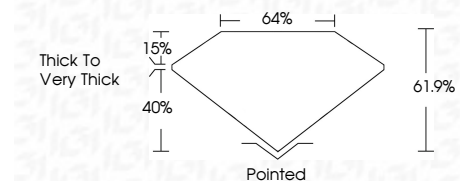
ELECTRONIC COPY

LG766660793
Report verification at igi.org



February 12, 2026
IGI Report Number **LG766660793**
Description **LABORATORY GROWN DIAMOND**
Shape and Cutting Style **OCTAGONAL STEP CUT**
Measurements **9.91 X 7.74 X 4.79 MM**

GRADING RESULTS
Carat Weight **3.12 CARATS**
Color Grade **FANCY BROWN**
Clarity Grade **VS 2**



ADDITIONAL GRADING INFORMATION
Polish **EXCELLENT**
Symmetry **EXCELLENT**
Fluorescence **VERY SLIGHT**
Inscription(s) **IGI LG766660793**
Comments: This Laboratory Grown Diamond was created by Chemical Vapor Deposition (CVD) growth process. Indications of post-growth treatment.



February 12, 2026
IGI Report No LG766660793
OCTAGONAL STEP CUT
9.91 X 7.74 X 4.79 MM
3.12 CARATS
FANCY BROWN
VS 2
61.9%
64%
Thick to Very Thick
Pointed
EXCELLENT
EXCELLENT
VERY SLIGHT
IGI LG766660793
Comments: This Laboratory Grown Diamond was created by Chemical Vapor Deposition (CVD) growth process. Indications of post-growth treatment.

LABORATORY GROWN DIAMOND REPORT

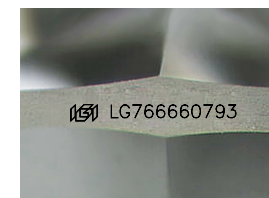
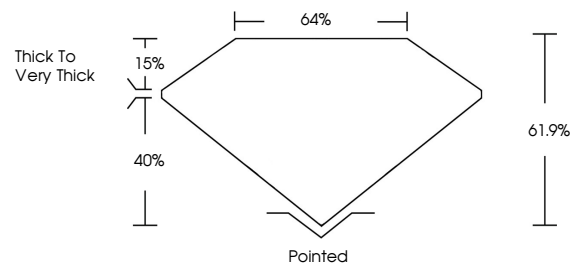
February 12, 2026
IGI Report Number **LG766660793**
Description **LABORATORY GROWN DIAMOND**
Shape and Cutting Style **OCTAGONAL STEP CUT**
Measurements **9.91 X 7.74 X 4.79 MM**

GRADING RESULTS
Carat Weight **3.12 CARATS**
Color Grade **FANCY BROWN**
Clarity Grade **VS 2**

ADDITIONAL GRADING INFORMATION
Polish **EXCELLENT**
Symmetry **EXCELLENT**
Fluorescence **VERY SLIGHT**
Inscription(s) **IGI LG766660793**

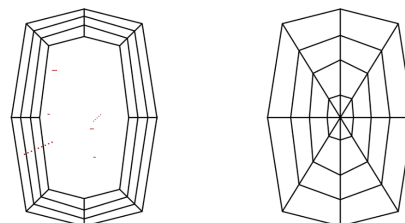
Comments: This Laboratory Grown Diamond was created by Chemical Vapor Deposition (CVD) growth process. Indications of post-growth treatment.

PROPORTIONS



Sample Image Used

CLARITY CHARACTERISTICS



KEY TO SYMBOLS

Red symbols indicate internal characteristics.
Green symbols indicate external characteristics.

COLOR

D E F G H I J Faint Very Light Light

CLARITY

FL	IF	VS ¹⁻²	VS ¹⁻²	SI ¹⁻²	I ¹⁻³
Flawless	Internally Flawless	Very Very Slightly Included	Very Slightly Included	Slightly Included	Included

