



ELECTRONIC COPY

LG766660731
Report verification at igi.org



January 26, 2026
IGI Report Number **LG766660731**
Description **LABORATORY GROWN DIAMOND**
Shape and Cutting Style **CUSHION MODIFIED BRILLIANT**
Measurements **11.23 X 8.45 X 5.71 MM**
GRADING RESULTS
Carat Weight **5.02 CARATS**
Color Grade **FANCY VIVID BROWNISH PINK**
Clarity Grade **VS 1**

LABORATORY GROWN DIAMOND REPORT

January 26, 2026
IGI Report Number **LG766660731**
Description **LABORATORY GROWN DIAMOND**
Shape and Cutting Style **CUSHION MODIFIED BRILLIANT**
Measurements **11.23 X 8.45 X 5.71 MM**

GRADING RESULTS

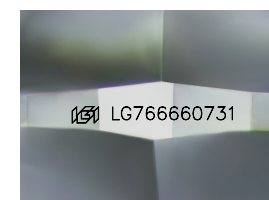
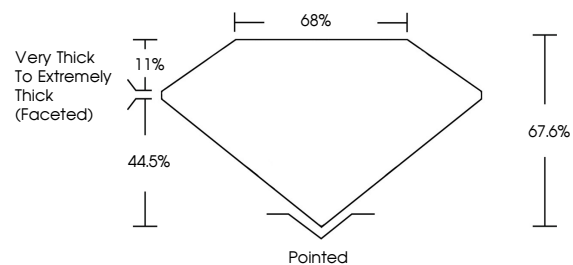
Carat Weight **5.02 CARATS**
Color Grade **FANCY VIVID BROWNISH PINK**
Clarity Grade **VS 1**

ADDITIONAL GRADING INFORMATION

Polish **EXCELLENT**
Symmetry **VERY GOOD**
Fluorescence **SLIGHT**
Inscription(s) **IGI LG766660731**

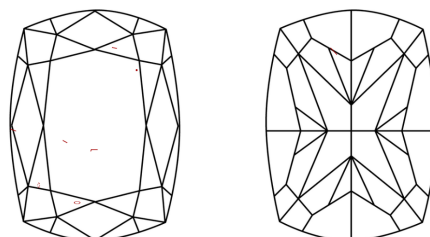
Comments: This Laboratory Grown Diamond was created by Chemical Vapor Deposition (CVD) growth process.
Indications of post-growth treatment.

PROPORTIONS



Sample Image Used

CLARITY CHARACTERISTICS



KEY TO SYMBOLS

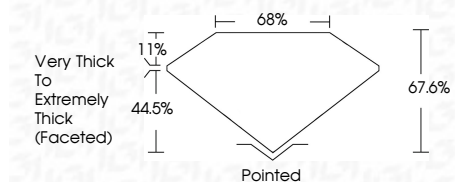
Red symbols indicate internal characteristics.
Green symbols indicate external characteristics.

COLOR

D E F G H I J Faint Very Light Light

CLARITY

| FL | IF | VS ¹⁻² | VS ¹⁻² | SI ¹⁻² | I ¹⁻³ |
|----------|---------------------|-----------------------------|------------------------|-------------------|------------------|
| Flawless | Internally Flawless | Very Very Slightly Included | Very Slightly Included | Slightly Included | Included |



ADDITIONAL GRADING INFORMATION

Polish **EXCELLENT**
Symmetry **VERY GOOD**
Fluorescence **SLIGHT**
Inscription(s) **IGI LG766660731**
Comments: This Laboratory Grown Diamond was created by Chemical Vapor Deposition (CVD) growth process.
Indications of post-growth treatment.



January 26, 2026
IGI Report No LG766660731
CUSHION MODIFIED BRILLIANT
5.02 CARATS
FANCY VIVID BROWNISH PINK
VS 1
67.6%
68%
Very Thick to Extremely Thick (Faceted)
Pointed
EXCELLENT
VERY GOOD
SLIGHT
IGI LG766660731
Comments: This Laboratory Grown Diamond was created by Chemical Vapor Deposition (CVD) growth process.
Indications of post-growth treatment.