



ELECTRONIC COPY

LG766660728
Report verification at igi.org



January 26, 2026
IGI Report Number **LG766660728**
Description **LABORATORY GROWN DIAMOND**
Shape and Cutting Style **CUSHION MODIFIED BRILLIANT**
Measurements **12.15 X 8.50 X 5.56 MM**
GRADING RESULTS
Carat Weight **5.38 CARATS**
Color Grade **FANCY VIVID BROWN PINK**
Clarity Grade **VS 2**

LABORATORY GROWN DIAMOND REPORT

January 26, 2026
IGI Report Number **LG766660728**
Description **LABORATORY GROWN DIAMOND**
Shape and Cutting Style **CUSHION MODIFIED BRILLIANT**
Measurements **12.15 X 8.50 X 5.56 MM**

GRADING RESULTS

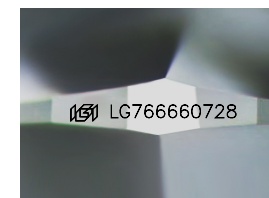
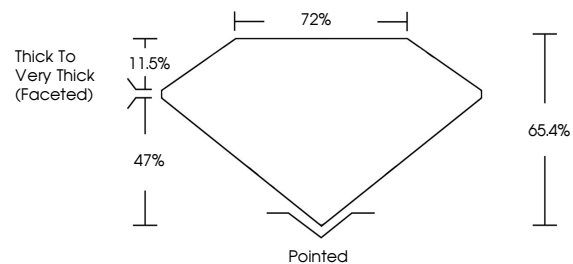
Carat Weight **5.38 CARATS**
Color Grade **FANCY VIVID BROWN PINK**
Clarity Grade **VS 2**

ADDITIONAL GRADING INFORMATION

Polish **EXCELLENT**
Symmetry **EXCELLENT**
Fluorescence **SLIGHT**
Inscription(s) **LG766660728**

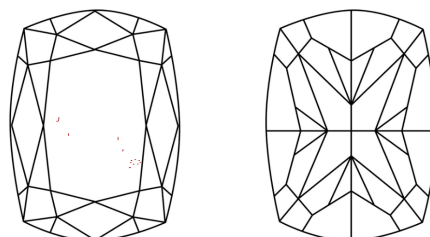
Comments: This Laboratory Grown Diamond was created by Chemical Vapor Deposition (CVD) growth process.
Indications of post-growth treatment.

PROPORTIONS



Sample Image Used

CLARITY CHARACTERISTICS



KEY TO SYMBOLS

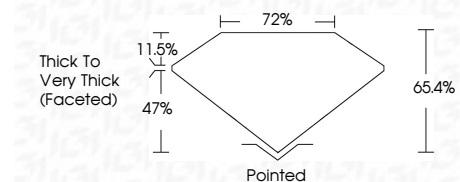
Red symbols indicate internal characteristics.
Green symbols indicate external characteristics.

COLOR

D E F G H I J Faint Very Light Light

CLARITY

FL	IF	VS ¹⁻²	VS ¹⁻²	SI ¹⁻²	I ¹⁻³
Flawless	Internally Flawless	Very Very Slightly Included	Very Slightly Included	Slightly Included	Included



ADDITIONAL GRADING INFORMATION

Polish **EXCELLENT**
Symmetry **EXCELLENT**
Fluorescence **SLIGHT**
Inscription(s) **LG766660728**
Comments: This Laboratory Grown Diamond was created by Chemical Vapor Deposition (CVD) growth process.
Indications of post-growth treatment.



January 26, 2026
IGI Report No **LG766660728**
CUSHION MODIFIED BRILLIANT
Carat Weight **5.38 CARATS**
Color Grade **FANCY VIVID BROWN PINK**
Clarity Grade **VS 2**
Depth **65.4%**
Table **72%**
Girdle **Thick to Very Thick (Faceted)**
Culet **Pointed**
Polish **EXCELLENT**
Symmetry **EXCELLENT**
Fluorescence **SLIGHT**
Inscription(s) **LG766660728**
Comments: This Laboratory Grown Diamond was created by Chemical Vapor Deposition (CVD) growth process.
Indications of post-growth treatment.