



ELECTRONIC COPY

LG76660563
Report verification at igi.org



January 24, 2026
IGI Report Number **LG76660563**
Description **LABORATORY GROWN DIAMOND**
Shape and Cutting Style **CUSHION MODIFIED BRILLIANT**
Measurements **10.42 X 9.19 X 6.08 MM**
GRADING RESULTS
Carat Weight **5.53 CARATS**
Color Grade **FANCY VIVID BROWNISH PINK**
Clarity Grade **VS 2**

LABORATORY GROWN DIAMOND REPORT

January 24, 2026
IGI Report Number **LG76660563**
Description **LABORATORY GROWN DIAMOND**
Shape and Cutting Style **CUSHION MODIFIED BRILLIANT**
Measurements **10.42 X 9.19 X 6.08 MM**

GRADING RESULTS

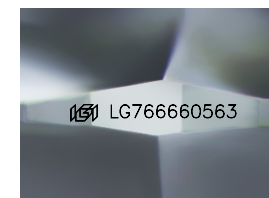
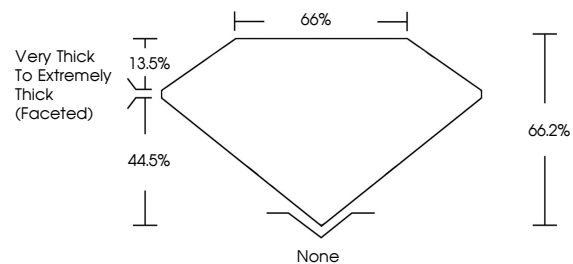
Carat Weight **5.53 CARATS**
Color Grade **FANCY VIVID BROWNISH PINK**
Clarity Grade **VS 2**

ADDITIONAL GRADING INFORMATION

Polish **EXCELLENT**
Symmetry **EXCELLENT**
Fluorescence **SLIGHT**
Inscription(s) **LG76660563**

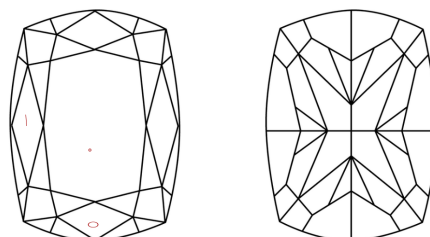
Comments: This Laboratory Grown Diamond was created by Chemical Vapor Deposition (CVD) growth process.
Indications of post-growth treatment.

PROPORTIONS



Sample Image Used

CLARITY CHARACTERISTICS



KEY TO SYMBOLS

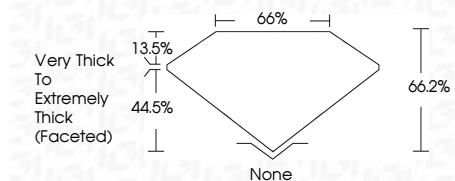
Red symbols indicate internal characteristics.
Green symbols indicate external characteristics.

COLOR

D E F G H I J Faint Very Light Light

CLARITY

FL	IF	VS ¹⁻²	VS ¹⁻²	SI ¹⁻²	I ¹⁻³
Flawless	Internally Flawless	Very Very Slightly Included	Very Slightly Included	Slightly Included	Included



ADDITIONAL GRADING INFORMATION

Polish **EXCELLENT**
Symmetry **EXCELLENT**
Fluorescence **SLIGHT**
Inscription(s) **LG76660563**
Comments: This Laboratory Grown Diamond was created by Chemical Vapor Deposition (CVD) growth process.
Indications of post-growth treatment.



January 24, 2026
IGI Report No LG76660563
CUSHION MODIFIED BRILLIANT
5.53 CARATS
FANCY VIVID BROWNISH PINK
VS 2
66.2%
66%
Very Thick to Extremely Thick (Faceted)
None
EXCELLENT
EXCELLENT
SLIGHT
 LG76660563
Comments: This Laboratory Grown Diamond was created by Chemical Vapor Deposition (CVD) growth process.
Indications of post-growth treatment.