



ELECTRONIC COPY

LG766659714
Report verification at igi.org



February 3, 2026

IGI Report Number **LG766659714**

Description **LABORATORY GROWN DIAMOND**

Shape and Cutting Style **ROUND BRILLIANT**

Measurements **10.02 - 10.09 X 6.20 MM**

GRADING RESULTS

Carat Weight **4.00 CARATS**

Color Grade **G**

Clarity Grade **VS 1**

Cut Grade **VERY GOOD**

February 3, 2026
IGI Report Number **LG766659714**
Description **LABORATORY GROWN DIAMOND**
Shape and Cutting Style **ROUND BRILLIANT**
Measurements **10.02 - 10.09 X 6.20 MM**

GRADING RESULTS

Carat Weight **4.00 CARATS**

Color Grade **G**

Clarity Grade **VS 1**

Cut Grade **VERY GOOD**

ADDITIONAL GRADING INFORMATION

Polish **EXCELLENT**

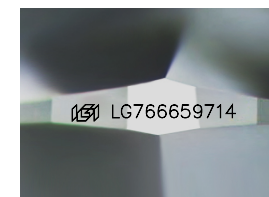
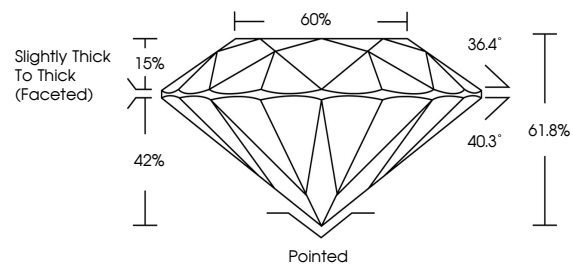
Symmetry **EXCELLENT**

Fluorescence **NONE**

Inscription(s) **IGI LG766659714**

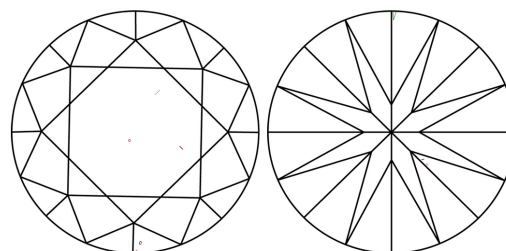
Comments: This Laboratory Grown Diamond was created by Chemical Vapor Deposition (CVD) growth process. Type IIa

PROPORTIONS



Sample Image Used

CLARITY CHARACTERISTICS



KEY TO SYMBOLS

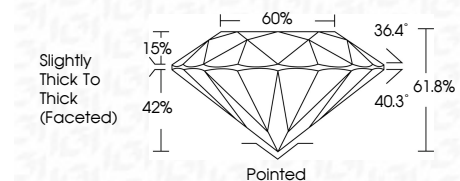
Red symbols indicate internal characteristics.
Green symbols indicate external characteristics.

COLOR

D E F G H I J Faint Very Light Light

CLARITY

FL	IF	VS ¹⁻²	VS ¹⁻²	SI ¹⁻²	I ¹⁻³
Flawless	Internally Flawless	Very Very Slightly Included	Very Slightly Included	Slightly Included	Included



ADDITIONAL GRADING INFORMATION

Polish **EXCELLENT**

Symmetry **EXCELLENT**

Fluorescence **NONE**

Inscription(s) **IGI LG766659714**

Comments: This Laboratory Grown Diamond was created by Chemical Vapor Deposition (CVD) growth process. Type IIa



IGI



February 3, 2026
IGI Report No LG766659714
ROUND BRILLIANT

4.00 CARATS
Carat Weight
Color Grade **G**

VS 1
Clarity Grade
Cut Grade **VERY GOOD**
Depth **61.8%**
Table **60%**
Girdle **Slightly Thick To Thick (Faceted)**

Pointed
Culet **EXCELLENT**
Polish **EXCELLENT**
Symmetry **EXCELLENT**
Fluorescence **NONE**
Inscription(s) **IGI LG766659714**

Comments: This Laboratory Grown Diamond was created by Chemical Vapor Deposition (CVD) growth process. Type IIa